

# PRODUCTS AND SERVICES GUIDE



2024



# EDCO Inc.

## Complete Jobs Faster and Improve Efficiency

Contractors know that while time does equal money, there will be very little success without quality results. EDCO works to provide their customers with equipment that does both: saves time and leaves a superior finish. The EDCO Diamond Drum is their latest innovation that drastically improves the efficiency of resurfacing projects when using a Crete-Planer. The Diamond Drum can complete projects up to 3 to 4 times faster and last 15 times longer than a standard carbide drum.

### SCARIFY AND SMOOTH IN ONE STEP

The polycrystalline diamond (PCD) found on the drum is the hardest artificial substance in the world and has excellent wear resistance. When used

on resurfacing projects, these drums leave a much smoother finish in one step, which saves significant resources.

On a typical project, scarifiers using flailing carbide cutters leave a Concrete Surface Profile (CSP) of 4-6 when they remove the surface material. It also takes multiple passes with a floor grinder and various grit diamond tooling to achieve these results. The surface then must be smoothed with a diamond floor grinder to achieve the final desired result.

### THE EDCO DIAMOND DRUM

- Plows off high-build epoxy and cementitious/epoxy materials leaving a perfect profile for recoating or polishing;
- Dramatically enhances your EDCO Crete-Planer by delivering a smooth profile at 2-3 times faster than the carbide drum;
- One EDCO Diamond Drum will outlast over 15 traditional carbide drums;
- Excellent line removal and safety line inlay on both asphalt and concrete;
- Combines multiple steps of scarifying and grinding (no need to grind and smooth with two different machines);
- Saves time, money, and labor;
- With a Diamond Drum, contractors can remove and smooth in one step, leaving a CSP profile of a 1-2 which can be achieved in one pass. Since contractors can achieve their desired results in half the time, using the Diamond Drum can help them gain higher profit margins on their projects.

### CONTROL YOUR RESOURCES

Being in control of how fast a job takes you to complete—and doing the work in half the time—will also save you in labor and material costs. With a typical carbide drum, the



cutter rotates and essentially slams onto the surface, causing a micro-fracture to the surface when removing materials. With the Diamond Drum, there is more of a shaving action, which causes less trauma to the surface, allowing for a better result.

Not only will the Diamond Drum provide a smoother finish faster, but it will also keep your machine running longer. With a typical scarifier, contractors put a lot of wear on the machine to get the desired surface finish. The shaving action of the Diamond Drum is less abrasive and handles the job in a more effective manner. The Diamond Drum is also much more durable than a typical carbide, lasting longer than 15 traditional carbide drums.

EDCO has over 60 years of experience in adding value to their customers' businesses. In a congested market, EDCO tools are the number one choice of contractors who are looking to gain an edge over their competition. The Diamond Drum will ensure you're going into every jobsite with the ultimate tool to achieve a desired profile of CSP 1-2 and finish in half the time. ■

For more information, contact  
[info@edcoinc.com](mailto:info@edcoinc.com).







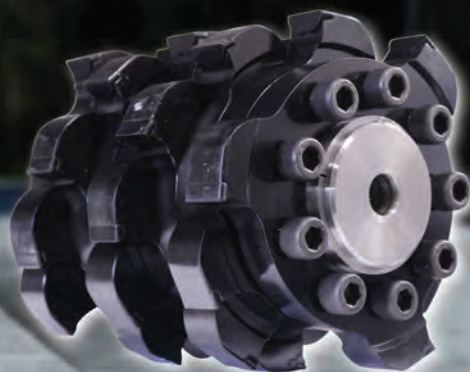
# INCREASE PROFITABILITY

with an **EDCO** DIAMOND DRUM

EDCO's DIAMOND Drum is much more durable than a typical carbide, out lasting over 15 traditional carbide drums.

Combine multiple steps of scarifying and grinding; no need to grind and smooth with 2 different machines.

VISIT [edcoinc.com](http://edcoinc.com) TO LEARN MORE.



**MILLING MACHINES**  
Available in Gas,  
Electric, and Propane



# Isuzu

## The Power Behind It All



Isuzu is known for reliable, eco-friendly, durable, and technologically advanced engines that power construction, agricultural, industrial, medical, and rental markets in the Americas. All with quiet, fuel efficient products for customer-specific applications and are backed by a distribution network providing after-sales support.



### ISUZU PRODUCTS, BUILT TO LAST

Isuzu Tier 4 and Stage V engines and power units, branded under Isuzu REDTech™, provide quiet, low maintenance and fuel-efficient solutions for existing and new applications. From 8.8kW to 382kW, these engines and power units are precision tuned for efficiency, while reducing oil and fuel consumption. A long-lasting and robust fuel injection system incorporates excellent fuel economy and extended service life. Stringent criteria to lower NVH (noise, vibration, harshness) are engineered into every Isuzu product. Each application is designed to meet customer specifications and is engineering-validated for each environment. Isuzu REDTech™ engines and power units with reliable performance, durability, and high thermal efficiency help reduce downtime.

All Isuzu diesel products are supported by Isuzu Genuine Parts, a distributor and dealer network, along with dedicated professionals to ensure power solutions that are reliable, eco-friendly, durable, and technologically advanced.

### PRE-VALIDATED RELIABLE POWER

Isuzu Open GenSet-Ready Power Units come in three sizes: 4J, 4H, and 6H. As delivered, all are at least 90-percent pre-validated. Our 4J-Series is equipped as a 3.0L, 4 Cylinder, 70.8 kW (95 HP) constant speed @1800 RPM Diesel engine. The 4H-Series is equipped with a 5.2L, 4 Cylinder, 127.5 kW (171 HP) constant speed @1800 RPM and the 6H-Series 7.8L, 6 Cylinder, 193.8 kW (260 HP) @1800 RPM. These are all Tier 4 Final Certified and branded under Isuzu REDTech™ (Reliable, Eco-Friendly, Durable, and Technologically Advanced Diesel Technology). Isuzu Open GenSet-Ready Power Units are built using all components and features necessary to successfully meet all installation testing criteria associated with long engine life, while also maintaining optimized performance. Isuzu REDTech™ Power Units have been engineered for use with several different generator manufacturers' products. These engines carry one of the best warranties in the industry, 5 year/5000 hour, and their power unit components offer a 2 year/2000 hour limited warranty.

### DURABLE AND ECO-FRIENDLY GENSET POWER

The standard power unit packages are engineered to include an air intake system with dual element air cleaner, exhaust gas after-treatment system, a complete cooling package, vibration isolators (engine and cooling package), and all engine filters. The power unit engine control module and wiring harness incorporates oil pressure, coolant temperature, intake air pressure, temperature and engine speed sensors and shutdowns.



### TOOLS AND TRAINING RESOURCES

Isuzu offers a Diagnostic Service Tool, the IDST for diagnostic trouble codes and automatic Engine Identification, which can read and clear ECM DCTs or read only DCU DTCs and perform a forced SCR purge. These tools are available through Isuzu distributors and are very effective for troubleshooting specific engine related concerns that may not need major work or expensive downtime. To support customer service requests, Isuzu offers training programs through some of their distributors, in certain parts of the country. This addresses a need for more hands-on training related to general maintenance or troubleshooting with turbo chargers, SCRs, and fuel injectors—all to better serve customer needs through our qualified distributors using their expertise and Isuzu Genuine Parts for better service life. ■



**4JJ1X SERIES**  
71 kW (95 HP) Tier 4 Final



**4HK1X SERIES**  
127.4 kW (171 HP) Tier 4 Final



**6HK1X SERIES**  
194 kW (260 HP) Tier 4 Final

# ISUZU

The **power** behind it all.™

## POWERING POSSIBILITIES

For over a century, we've been pushing the boundaries of diesel engine technology, creating quality, eco-friendly and durable solutions that power industries. From commercial trucks to off-road industrial agricultural, construction, medical, and rental markets in the America's, our engines deliver the reliability you need to conquer any challenge. With Isuzu, you're not just purchasing engine solutions – you're investing in long-term value and success.

### ENGINES

11.8 - 512 HP  
(8.8 - 382 kW)



### POWER UNITS

14.8 - 282 HP  
(11 - 210.3 kW)



Learn more about our full range of Isuzu Diesel engines, power units, genuine parts, diagnostic tools, training & support, dedicated service network and our industry-leading warranty at [IsuzuEngines.com](http://IsuzuEngines.com)



**ISUZU**  
**REDTECH™**  
Reliable | Eco-friendly | Durable | Technologically Advanced



# National Trench Safety

In 2023, National Trench Safety was invited to bid on a project with a large local civil contractor in St Louis. The project consisted of eight large, deep excavations, including a very complex diameter of pipe entering and exiting structures that ranged from 72 to 108 inches. All structures were to be cast in the places designed.

The contractor would need additional room for their carpenters to build forms and perform their work. Due to shoring conditions on this site, traditional shoring methods could not be applied. We discussed our client's concerns and presented our broad product line to provide a personalized solution. Our team analyzed the drawings carefully, reviewed the Geotechnical Report (Soils Report) and convened with our engineering support experts.

After thoughtful deliberation, we decided slide rail would be the best fit for this project and its structures. Additionally, we considered the large pipe that was to be installed on the site and decided installing high arch spreaders for the customer's boxes was the safest approach.

It has been an honor to work with this contractor on their extensive project. The focus of our skilled NTS team has been to ensure our client's crew has all the resources to stay safe throughout the completion of their project. Safety first and foremost! NTS is grateful our customer has expressed the following about our services:

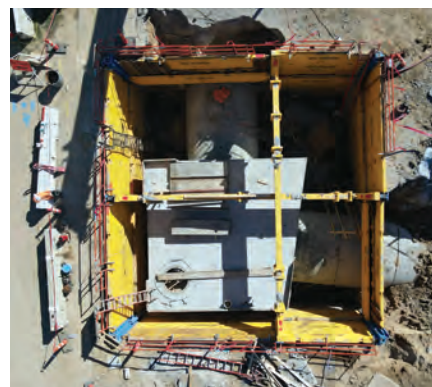
"I have been using National Trench Safety (NTS) for the past 5 years on various projects, but mostly deep sewer projects with multiple

types of trench-shielding and shoring systems. NTS has always been responsive and attentive to any questions or concerns we have. They consistently have onsite personnel at our project sites when conditions warrant to make sure installation processes are smooth with minimal issues. They have a wide range of rental equipment inventory that has helped us through our deepest, most complex projects. For deeper excavations, NTS is a go-to where they make the engineering and design of shoring systems expedited and smooth. I would recommend considering NTS for all complex sewer projects."

— J.K. (St Louis, MO) ■

*For more information, visit*

[www.ntsafety.com](http://www.ntsafety.com)







**NATIONAL  
TRENCH SAFETY**

WHERE SERVICE MEETS EXPERTISE

Shields  
Shoring  
Slide Rail  
Pipe Plugs  
Traffic Safety  
Trench Plates  
Fall Protection  
Confined Space  
Aluminum Boxes  
In-House Engineering  
Safety Training Courses  
Located Nationwide

**832.200.0988**



# Studson

## The Evolution of Safety Helmets: Style, Comfort, and Protection



In the realm of construction and industrial sites, hard hats are synonymous with safety. But as construction evolves, so must the tools that protect workers. The traditional hard hat, while iconic, no longer provides the comprehensive protection needed in modern workplaces. With a shifting focus toward minimizing falls, slips, and trips—accounting for a significant portion of workplace incidents—a new standard is emerging: Type II safety helmets.

### TRANSITION TO TYPE II HELMETS

With the alarming statistics of workplace fatalities, the need for innovation in head protection is evident. Between 2015 and 2019, falls, slips, and trips were the primary cause of fatalities in the construction industry, comprising 37.9 percent of all recorded fatalities. In contrast, fatalities resulting from falling objects accounted for 16.7 percent of cases during the same period, as reported by the U.S. Bureau of Labor Statistics.

Type II safety helmets, conforming to the American National Standard for Industrial Head Protection ANSI Z89.1, offer a holistic approach to head safety. Unlike traditional hard hats that are designed to protect the top of the head, Type II helmets provide full, 360-degree coverage around the head, safeguarding against various workplace hazards.

### ADVANTAGES OF TYPE II

The benefits of Type II helmets extend beyond safety. Durability enhancements reduce the frequency of PPE replacement, translating to cost savings for organizations. Moreover, fewer injuries mean reduced worker compensation claims and potentially lower liability insurance expenses. Embracing Type II helmets fosters a culture of safety, ultimately enhancing productivity and profitability.

### RESISTANCE TO CHANGE

However, for many workers, the traditional hard hat symbolizes pride, resilience, and identity. Its distinctive design is not merely functional but carries sentimental and historical value. When Type II helmets first entered the scene, this new form factor exclusively featured mountain-climbing style designs, sparking some resistance, particularly from long-time hard hat wearers who prefer the full-brim style.

Recognizing the importance of aesthetics and comfort, manufacturers like Studson have pivoted towards designing Type II helmets that combine modern safety features but with familiar styles. By integrating the full-brim design, reminiscent of traditional hard hats, wearers can embrace change without sacrificing identity. This strategic fusion of form and function bridges the gap between safety requirements and worker preferences, facilitating widespread adoption.

Of course, the evolution of Type II helmets is not merely cosmetic. Advanced technologies, such as welded-tube polymers from Koroyd and NFC chips from Twiceme enhance impact protection while streamlining emergency response procedures, respectively. Additionally, replaceable pad sets ensure comfort and hygiene, while new snap helmet buckles allow for easy fastening and removal, even when wearing heavy gloves, further incentivizing adoption.

### PROMOTING MASS ADOPTION

While organizations increasingly mandate Type II helmets, employee engagement remains crucial. Offering full-brim options with Type II protection provides a compelling compromise, easing the transition for workers. Furthermore, by aligning safety with style and comfort, companies can accelerate the adoption of advanced head protection solutions.

The safety helmet landscape is transforming, prioritizing comprehensive protection alongside style and comfort. Type II safety helmets, specifically those that feature a full brim like traditional hard hats, represent a pivotal advancement in workplace safety, addressing modern hazards while respecting the heritage of traditional hard hats. Through innovation and collaboration, industries can ensure that workers are adequately protected, empowering them to thrive in dynamic work environments. ■



# CLASSIC MEETS



# CUTTING EDGE



The revolutionary STUDSON SHK-1 is the only safety helmet to combine two different safety technologies into one helmet. Designed for the trades, it utilizes cutting-edge head protection components used in extreme sports. And the new full-brim helmet represents the first of its kind in the Type II safety helmet category. Simply put, the STUDSON SHK-1 Full-Brim safety helmet is the most innovative on the market. Visit [STUDSON.com](http://STUDSON.com) for more info.

LIFE SAVING TECH PARTNERS

KOROYD

twiceme®



# Yokohama Off-Highway Tires

## Galaxy AT Grip Steel Radial

The Galaxy AT Grip Steel was designed from the ground up in close consultation with construction contractors, skid steer operators, and OTR tire dealers. The result: a revolutionary steel-belted radial that delivers all-around performance and longer tire life for skid steers and loaders.

The AT Grip Steel combines all the advantages of radial construction tires—including a more evenly distributed load for longer wear, better traction, and greater stability—with the extra sidewall reinforcement that customers wanted.

### STURDIER SIDEWALL

In many radial applications, extra sidewall flexibility is a major plus for ride comfort and flotation. But skid steer operators made it clear that extra-sturdy sidewalls were a must for the ideal construction skid steer radial.

Reinforcing the sidewall of the AT Grip Steel adds the ability to handle the constant

strain on tires from skidding, turning, starting, and stopping. In addition to stability and durability, the reinforced sidewall adds cut and puncture resistance while minimizing bucking and bouncing. A flex-dampening ring below the bead prevents damage from lower-sidewall flexion, and molded dual guards protect the rim and sidewall from impact damage.

### BLOCK TREAD, STEEL BELTS

The non-directional block tread pattern of the Galaxy AT Grip Steel balances rubber and void at an optimal level for long wear on abrasive surfaces as well as excellent traction in loose soil, sand, mud, and even snow. The pattern's



blocks are 45 percent more tightly spaced at the center of the tread than at the shoulders. That results in a smoother ride and greater stability, while allowing the larger voids along the edges of the tire to enhance grip and self-cleaning.

The dense block pattern and special cut- and chip-resistant compound also resist puncture and damage from rocks and debris in rugged construction environments. That tough tread is underlain with steel radial belts that multiply the puncture protection of the AT Grip Steel—it's three to nearly four times more puncture resistant than competitive tires.

Steel radial belts also dissipate heat more efficiently than other materials, adding to tire life and performance.

### TOUGH AND RETREADABLE


In rigorous field testing, the AT Grip Steel radial outlasted conventional bias-ply skid steer tires by as much as 50 percent. With its retreadable casing, the AT Grip Steel can deliver even longer service for equipment owners—and even lower cost of ownership.

The Galaxy AT Grip Steel has raised the bar on skid steer tires' performance and value. That makes this the perfect time, and the perfect tire, for switching skid steers over to radials. ■





# **GALAXY**

- 
- Up to 49% longer tire life than bias-ply
  - Nearly 4x more puncture resistance
  - Steel radial belts
  - Reinforced sidewalls
  - Lower cost of ownership

**AT GRIP STEEL**

## **THE SKID STEER TIRE CONTRACTORS ASKED FOR**

We asked contractors and equipment operators what they wanted in a skid steer/loader tire. Then we built exactly what they asked for—the Galaxy AT Grip Steel radial. From the long-lasting, high-traction block tread to the sturdy, reinforced sidewalls, it's all there. We minimized bucking and bouncing, too.

Ask your tire dealer about the new Galaxy AT Grip Steel skid steer radial, visit [yokohama-atg.com](http://yokohama-atg.com) or call us at (800) 343-3276.



# Brigade Electronics

## Revolutionizing Safety on Construction Sites

**B**rigade Electronics stands at the forefront of safety innovations for the construction industry, particularly in the United States. Established in 1976 in the United Kingdom, our legacy began with the introduction of the first reversing alarm to Europe. Today, we continue to lead with products designed to enhance visibility, minimize blind spots, and ensure the safety of all site personnel.

Among our innovations is the Artificial Intelligence Detection Camera, a cutting-edge solution that identifies humans within a specific zone, reducing the chances of accidents. These cameras are equipped with algorithms to recognize human forms, ensuring drivers receive timely alerts to prevent collisions.

The Backeye®360 AI intelligent detection system, another cornerstone product tailored for construction, provides a 360-degree bird's-eye view around the vehicle. By combining images from four cameras, it gives drivers a comprehensive view of their surroundings, which is crucial on construction sites where visibility is often compromised.

The BackSense® Radar is a robust radar proximity sensor system designed to detect people and objects in blind spots, significantly reducing the risk of accidents. The BackSense® Radar operates effectively in all conditions, including darkness, smoke, and fog, by providing both visual and audible in-cab warnings. This ensures that drivers are alerted to potential hazards, even when their attention is divided.

The BackSense® Radar sensors come in both fixed detection range models and fully programmable models, offering the flexibility to create bespoke detection zones. This adaptability allows for the calibration of sensors to ignore fixed objects or bodywork, enhancing the system's effectiveness by focusing on genuine hazards. This customization feature is particularly valuable in construction, where the environment is constantly changing.

Brigade Electronics' products can also withstand the rigorous demands of construction sites, offering reliability and durability in harsh environments to ensure that you're always "safer with us." ■

Visit [www.brigade-inc.com](http://www.brigade-inc.com).

### BRIGADE ELECTRONICS IS A GLOBAL MARKET LEADER OF SAFETY DEVICES, WITH SOLUTIONS TO SUIT ALL COMMERCIAL VEHICLES AND MOBILE PLANT.

#### Radar Predict

Side radar with 180° cyclist detection alerts the driver when a collision is predicted.



#### Camera with AI

Recognizes and alerts the driver to people in the front and rear blind-spot.



#### Backeye®360

360° 4-camera system provides the driver with an HD 'top down' view of the vehicle's surroundings



#### Mobile Recorder

Captures vehicle data and HD footage from up to 12 vehicle mounted cameras.



#### 77Ghz Radar

Fixed and programmable detection zones. Detects stationary and moving objects.



#### Wireless System

Connects a camera to a monitor without the need for additional cables

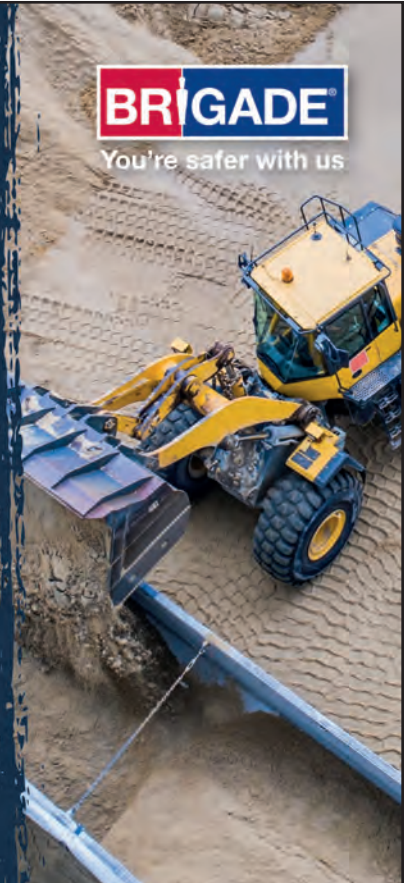


[www.brigade-inc.com](http://www.brigade-inc.com)

+1 (260) 766-4343



**BRIGADE**  
You're safer with us





# InSite Software

## V. Ballard Consulting Delivers Accurate Earthwork Bidding Quantities and Enhances Client Confidence

V. Ballard Consulting LLC is a civil engineering design and construction cost-estimating firm located in Suffolk, Virginia. The company serves general, grading, and utility contractors and developers.

When President Vanessa Ballard started her business, she used competing software at a previous job but instead chose InSite Elevation Pro for its ease of use and accurate earthwork bid quantities. Says Ballard, "InSite saves me a lot of time, money, and resources."

**Efficiency equals saving time.** Elevation Pro lets users easily import PDF, CAD, Drone, and files from any data collector. A coordinated cursor across all open workspaces, including 3Ds, confirms the data and makes combining plans with different scales easy. "I value the ability to import CAD files and align to the PDFs easily. This streamlines the data input process, enabling me to meet tight bidding deadlines."

**Validation of the numbers is critical,** which is why Vanessa relies on Elevation Pro's detailed reports and 3D images. "The biggest cost of construction besides the building is earthwork. I especially love including the cut and fill contour and subgrade maps in the reports," says Ballard. "For example, the cut and fill map helps my clients determine where and when they would need to bring in their trucks. Visualizing the site model in 3D installs confidence in the estimated quantities."

**Ease of use.** "Elevation Pro is very easy to use and to learn," says Ballard. "I absolutely love it, and my team loves it, too."

Elevation Pro is a complete sitework and GPS machine control modeling solution. ■

InSite saves me time, money, and resources.

**ELEVATE YOUR EXPECTATIONS**

*Be More Accurate, Competitive, and Confident*

**INSITE ELEVATION PRO**

**PDF & CAD Earthwork Takeoff and GPS Machine Control Modeling**

**Schedule a Live Demo Today!**

**InSiteSoftware.com | 877-746-7483**



# MAX USA

## Tying Rebar? MAX Rebar Tying Tools Can Help!

It's no surprise that rodbusters face a multitude of injuries on a regular basis while they are out in the field. From pre-fabrication yards to road and bridge construction, rodbusters perform demanding jobsite functions that often require repetitive tying motion while positioned in cramped conditions where they overexert their energy for eight hours or more. Mild injuries such as lower back fatigue to more pressing disorders like musculoskeletal injuries (MSIs) result in incurred costs to contractors, including workers' compensation claims, higher insurance rates, and even unforeseeable labor deficiencies as a direct result. Rodbusters can find some relief with the enhanced development and availability of rebar tying tools in the marketplace. From handheld operations to



standup rebar tying tools, rodbusters can look at integrating this kind of technology to avoid MSIs and fatigue from the labor-intensive job functions.

With over 30 years in experience, MAX has raised the bar when it comes to increasing worker efficiency, cutting operating costs for companies, and reducing back and musculoskeletal injuries amongst reinforcing rodbusters. Since then, the latest generation of TwinTier® tools has once again improved on the speed and ergonomics of tying rebar, which will have you finishing your road and bridge projects with great efficiency. Our professionals are available to do a live demo on your jobsite. Visit our website [www.maxusacorp.com](http://www.maxusacorp.com) and see how we can save you time and money. ■

Visit Our Website!

[www.maxusacorp.com/rebar\\_tying\\_tools](http://www.maxusacorp.com/rebar_tying_tools).

A large advertisement for the MAX TwinTier rebar tying tool. The central image shows a gloved hand holding the tool, which is a black and red cordless device with a battery pack. The tool has "TWINTIER" and "MAX" branding. The background is a blurred image of a rebar grid. To the right, large orange text reads "SAVE TIME, SAVE MONEY WITH A TWINTIER®". Below this, two bullet points state: "• INCREASE YOUR PRODUCTIVITY" and "• HALF A SECOND PER TIE". In the bottom left corner, there is a "TIE WIRE" logo with an American flag and the text "BUY AMERICA CERTIFIED NOW AVAILABLE", and a QR code. At the bottom center, the "MAX" logo is displayed above the website "maxusacorp.com".

**SAVE TIME,  
SAVE MONEY  
WITH A  
TWINTIER®**

• INCREASE YOUR PRODUCTIVITY  
• HALF A SECOND PER TIE

**MAX**  
maxusacorp.com

**TIE WIRE**  
BUY AMERICA CERTIFIED  
NOW AVAILABLE



# National Construction Rentals

National Construction Rentals understands the relationships we build are just as important as the quality of work we put into each project. It's with this principle in mind that has made us become the largest supplier of Rent-A-Fence, barricades, portable toilets, hand wash stations, luxury restrooms, and mobile storage containers in the nation.

For more than 60 years, National Construction Rentals has worked with every leading construction company, supplying temporary site service solutions to Bechtel, Fluor, Kiewit, Turner, PCL Construction, The Shaw Group, Skanska USA, Clark Group, Jacobs, Foster Wheeler AG, The Walsh Group, Balfour Beatty, Whiting-Turner, Tutor Perini Corp., CB&I, Gilbane, Hansel Phelps, Mortenson Construction, McCarthy Construction, and countless others.

From commercial and residential construction, to government projects, public works, and emergency response, National's team of experienced professionals dedicate themselves to each project until each customer is satisfied with the results. This was our goal when we started in 1962. This is what continues to define who we are today. ■

SERVING OVER  
275 METRO AREAS  
NATIONWIDE

For unparalleled service and superior customer support, contact us today at 800.352.5675 for the best in chain link fence, pedestrian barricades, portable toilets, hand wash stations, luxury restrooms, and mobile storage containers.

[www.rentnational.com](http://www.rentnational.com)

Rentals Made Easy.™

**Serving Over 275 Metro Areas Nationwide!**



**Mobile Storage**



**Luxury Restrooms**



**Hand Wash Stations**



**Portable Toilets**



**Barricades**



**Rent-A-Fence**

**NATIONAL**  
CONSTRUCTION RENTALS®

**800-352-5675 • rentnational.com**

Product availability varies by region.



# Poseidon Barge

Poseidon Barge specializes in manufacturing sectional barges used in the heavy construction industry to float equipment, men, or materials. Their sectional barges are manufactured in Berne, Indiana, and are transported via truck. They are used primarily on inland waterways that traditional deck barges cannot access.

## HULL SIZES TO FIT YOUR NEEDS

Poseidon manufactures barges with hull sizes of 4, 5, 7 and 10 feet tall. The Poseidon P10 is the largest sectional barge available that can be transported over the road and has floated some of the largest cranes in the industry. Poseidon's sectionals all have decks that are rated for 25,000 PSF of concentrated load capacity. Patented roll form technology or 1/4-inch deck plates are available for purchase.

## PRODUCT LINE ACCESSORIES

Accessories for each specific product line are available. Spuds, spud wells, deck cleats, rake sections, double drum winches, Sea Bee Thruster units, and Push Boats are all available for rent or purchase.

Poseidon Barge has a full engineering staff led by an in-house licensed Naval Architect. Layouts and Basic Stability Analysis are available for each project based on information provided by the client.

Poseidon operates in-house steel grit blasting and liquid spray-painting booths to better serve its customers with a premier product finish. Large enough to accommodate the P10 barge, they're some of the largest booths in the Midwestern United States, each equipped with a 25-ton crane for easy product handling.

## DESIGN SERVICES AVAILABLE

Poseidon performs contract manufacturing and finishing for markets outside of the marine industry. The company also offers design services through its engineering department.

## COMMITMENT TO QUALITY & SERVICE

Poseidon Barge was the first sectional barge manufacturer to receive ISO 9001:2015 certification. High quality, repeatability, and a focus on continual improvement separate Poseidon Barge from other manufacturers. Poseidon Barge prides itself on the principle that each barge section is built with these values at the core of everything they manufacture. ■

Visit [www.poseidonbarge.com](http://www.poseidonbarge.com), call 866.992.2743, or visit Poseidon Barge on Facebook, LinkedIn, and YouTube.

# POSEIDON



**Sectional barges ranging from 4 ft to 10 ft hulls.  
Custom barges, and custom heavy fabrication available.**



**Visit [www.poseidonbarge.com](http://www.poseidonbarge.com)  
or Call today! 866-992-2743**

**725 East Parr Road, Berne, IN 46711; PH: 866-99-BARGE; FAX: 260-589-2088  
STOCK LOCATIONS: Berne, IN • Belle Chase, LA • Mt Airy, NC • Cocoa, FL • Coeymans, NY  
St. Louis, MO • Plain, WI • Houston, TX • Rio Vista, CA**





# Reef Industries

For over 65 years, Reef Industries has been manufacturing and fabricating reinforced film laminates and composites. Reef Industries specializes in custom plastic laminates that safeguard and prolong the service life of customers' investments. Products range from covers that protect equipment during outdoor storage to underground marking tape that ensures buried utilities are protected from accidental dig-ins. Reef Industries provides customers with dependable and proven high-quality materials for long-term performance.

Each year, countless building owners suffer the problems associated with material and systems failures due to moisture. Reef Industries' Griffolyn® vapor barriers and vapor retarders can prevent water vapor from causing poor insulation performance,



structural damage, and other moisture-related problems. Also, our Transguard® concrete slab floor protection sheets temporarily protect slabs from latent damage during construction and remediation projects. Damage to newly poured concrete or decorative colored floors caused by construction traffic can be

extremely costly. The Griffolyn® polyethylene vapor retarder system and Transguard® slab floor protection offers the complete building solution. ■

For more information,  
visit [www.reefindustries.com](http://www.reefindustries.com).



## GRIFFOLYN®

### VAPOR PROTECTION SYSTEMS

CONTROL MOISTURE IN THE BUILDING ENVELOPE

ROOF

CRAWL SPACE

WALL

UNDER SLAB

# BUILD WITH US.





## TRANSGUARD®

### CONCRETE CURING COVERS

INDOOR / OUTDOOR USE  
HIGH TEAR RESISTANT  
REUSABLE

[reefindustries.com](http://reefindustries.com) • 800.231.6074



# Salem Hydraulics

Salem Hydraulics has been serving the Hydraulic and Pneumatic, Mobile Construction, and Industrial Industries since 1978. Located within the Beautiful Shenandoah Valley in Salem Virginia, Salem Hydraulics has well over 100+ years combined experience and specializes in the

sales, remanufacturing, and repair of many hydraulic Components such as Hydraulic Attachments, (Hammers, Breakers, Crushers, Sheers, Grapples, Compactors, etc.) Hydraulic Pumps & Motors, Hydraulic Valves, and Hydraulic & Pneumatic Cylinders for all major brands of equipment.

Whether you need a piston pump in North America, or a custom design & built power unit system half way around the world, we are ready to serve you. We pride ourselves in supplying the highest quality ... Attachments, Components, Parts, Service, and Systems available. All at competitive pricing. We hope to have the opportunity to serve you soon!

Please feel free to contact us at any time via phone, fax, or email as we look forward to hearing from you. Our staff is eagerly awaiting your call or email with readiness to assist you. ■

Phone: 540.387.1318 or 800.727.7938.

Fax: 540.389.4478.

Email: [sales@salemhydraulics.com](mailto:sales@salemhydraulics.com).

For more information, visit

[www.salemhydraulics.com](http://www.salemhydraulics.com).

AT SALEM HYDRAULICS, WE TAKE PRIDE  
IN BEING A WORLD LEADING SUPPLIER  
OF VERY HIGH QUALITY COMPONENTS,  
REPAIRS AS WELL AS SPARE PARTS  
TO KEEP YOUR PROJECTS AND  
COMPANIES RUNNING SMOOTHLY.

## Salem Hydraulics Company

**REPAIRS ♦ SALES ♦ PARTS**

**SPECIALIZING IN  
New, Used, &  
Remanufactured  
Hydraulic  
Attachments**

**YOU NEED  
IT, WE  
SUPPLY IT!**

**REMAN**

**Allied • Atlas Copco • BTI • Chicago Pneumatics • Huskie • Indeco • Kent • Furukawa  
NPK • Okada • Rammer • Soosan • Stanley • Toki • Tramac Montabert • T&H-Technology**

**Email: [sales@salemhydraulics.com](mailto:sales@salemhydraulics.com)**

**Toll Free: 800.727.7938 • 540.387.1318 • 540.389.4478 fax • [www.salemhydraulics.com](http://www.salemhydraulics.com)**





# Valhalla Custom Gear

ValhallaCustomGear.com is a national leader in customizing and corporate branding of hard hats for the trades.

We make YOUR corporate brand stand out from the rest!

Our specialty is high quality, custom design of hard hats and protective head gear.

We customize right here in the USA, offering short lead time, market understanding, focus on the details, and unique designs to meet your individual project needs. We design, customize, and deliver for:

- Corporate Branding
- Project Completion
- Safety Recognition
- Work Appreciation
- In Memory Of
- For a Cause
- Affiliation
- Patriotism

## WHAT IS HYDRO-DIPPING?

Hydro-dipping is a design application process widely adopted by hard hat manufacturers. With hydro-dipping, the design can incorporate customer's site and equipment pictures, corporate branding and colors, logos, personalization, and safety mantras.

The hydro-dipping process does not harm the hard hat material. If any cracks or damage occurs, it will be visible during inspection.

The process is easy to replicate, making it possible to have design uniformity across a large batch.

We recommend hydro-dipping for hard hat customization, as it allows for safety inspections, design creativity, repeatability, and highest value for the money.

Contact us today.

Let's design YOUR hard hat! ■

## VALHALLA CUSTOM GEAR

Springboro, Ohio, USA

Phone: 1 (414) 331-1345

Web: [www.ValhallaCustomGear.com](http://www.ValhallaCustomGear.com)

E-Mail: [kent@ValhallaCustomGear.com](mailto:kent@ValhallaCustomGear.com)

**YOUR HARD HAT SHOULD LOOK AS BADASS AS YOU!**

**"CUSTOMIZE YOURS TODAY"**

**CORPORATE BRANDING, GREAT GIFTS**

**PROUDLY CUSTOMIZED**   
**SPRINGBORO OHIO USA**

  
**VALHALLACUSTOMGEAR.COM**



# Concrete Reinforcing Steel Institute

The Concrete Reinforcing Steel Institute (CRSI) is making it easier to design and build in reinforced concrete with helpful technical information, design guides and checklists, field and construction publications, and reference documents. CRSI represents the reinforcing steel industry and is the technical resource and advocate for steel reinforcement in concrete construction. The Institute authors many industry-trusted technical publications, ANSI-standards documents, design aids, reference materials and educational opportunities to advance and standardize the reinforced concrete construction industry.

**If you work with rebar, you should know CRSI!** CRSI's national staff and Region Managers are your resource for design and constructability challenges. Many of the Institute's documents and publications are referenced and used as the standard in steel reinforced concrete construction practices.

**Become a member of one of the Nation's oldest trade associations and benefit from nearly 100 years of technical expertise!** CRSI members have priority access to our team of experienced engineering professionals.

**And, of course, there are Member discounts!** CRSI members receive discounts on all CRSI field publications, design guides, and more. Typically, savings can be as much as half off! ■

For information on all our publications and membership, visit [www.crsi.org](http://www.crsi.org) or call 847.517.1200.



**FREE Rebar Reference App**

**NEW EDITIONS**

**Your Go-To Resources in the Field for Steel Reinforced Concrete Construction**

Manual of Standard Practice  
Reinforcing Bars: Anchorages and Splices • Placing Reinforcing Bars  
Field Inspection of Reinforcing Bars

**Membership in CRSI receives substantial publication discounts!**  
Join today and get publications savings and more member benefits.

**Get the FREE Rebar Reference Mobile App!**  
New build just released!

**EST. 1924**  
**CRSI** Concrete Reinforcing Steel Institute  
Celebrating a Century of Industry Impact.

visit [www.crsi.org](http://www.crsi.org)

## HitchDoc

The **Dual Dozer** from HitchDoc is designed to keep your costs down by saving you time and money. High capacity front and rear boxes combined with rear mounted wheels allow operators to grab more material from the pile and spread it more efficiently. Because the blade sits in front of the wheels, you can move material closer to edges and prevent false corrections. Level the material to finish grade as normal and then make a final pass in reverse to leave a smooth finish with no wheel tracks.

The **Dual Dozer** works with all industry-leading machine controls at the highest levels, including laser receivers, slope and sonic tracers, GPS, and 3D mapping. For skid steer applications, hydraulic connections use standard quick couplers. In-cab monitors and fingertip controls allow easy operation. Choose the 3 point attachment option for applications where a tractor is more appropriate.

HitchDoc works with a trusted dealer network to provide the highest level of customer service. ■

**Make the grade with a Dual Dozer from HitchDoc.**

For more information on the Dual Dozer or to become a trusted dealer, visit [www.hitchdoc.com/dual-dozer.php](http://www.hitchdoc.com/dual-dozer.php).



**HITCHDOC**  
FAMILY OWNED. MIDWEST BASED. AMERICAN STEEL.

**DUAL DOZER**  
Laser Controlled

**COMPACT GRADING SYSTEM**

**DUAL DOZER GIVES YOU MORE!**

<b>More Cutting Edges</b>	<b>More Efficiency</b>
<b>More Savings</b>	<b>More Technology</b>
<b>More User-Friendly</b>	<b>More Options</b>
<b>More Rugged</b>	<b>More Steel</b>

With a dual-sided cutting edge and casters behind the blade, the Dual Dozer grades in both directions and easily maneuvers around pillars, corners, and other objects.

**GET MORE WITH A DUAL DOZER!**

**HitchDoc** [www.HitchDoc.com](http://www.HitchDoc.com)  
Sales@HitchDoc.com | (800) 446-8222



# Roadware

Roadware 10 Minute Concrete Mender is an excellent choice for repairing concrete topping slab delaminations and cracks. The very low viscosity of less than 8 cps and the exclusive Microdoweling penetration properties of the material allow it to flow deep into delaminated concrete voids. The Concrete Mender will restore aggregate interlock and will allow dynamic load transfer under heavy traffic. The expense and mess of high-pressure injection with epoxy can be avoided. No ports and no pumps needed. Fill and repair delaminations in hours, not days. Just drill several 3/8 inch (1 cm) holes into the concrete down to the delamination. Remove dust with a shop vacuum and inject Roadware 10 Minute Concrete Mender with a Roadware Easy-injection Mixer. In most cases, you can actually see the material exit the adjacent hole and verify the material is filling the delaminated area. You can even repair cracks 24 inches deep or more. ■

For more information,  
call 800.522.7623  
visit [www.roadware.us](http://www.roadware.us).



**ROADWARE  
10 MINUTE  
CONCRETE  
MENDER™**

**Easy Injection  
Structural Polyurethane  
No Pumps - No Ports  
Repair cracks,  
delaminations,  
spalls, joints  
and more.**

**ROADWARE.US**  
**MICRODOWELING**  
CONCRETE REPAIR SYSTEM

**ROADWARE INC.**  
**800-522-7623**

## You Need Leads! We Have the Solution!

Our digital marketing campaigns can identify prospects interested specifically in your product, and then tell you exactly who they are! See what our customers are saying:

“**The reports are awesome!** Thank you. If we can get that level of information from all of our suppliers, we will be very happy! We have already made one machine sale to a prospect from the eBlast and I am sure there will be more.”

Paul Gazik,  
Business Development/International Sales  
for **POWERMATE®**

Call us today to get started at  
**205.795.0223** or email us at  
[russell@mcsmag.com](mailto:russell@mcsmag.com)

**MODERN CONTRACTOR**  
SOLUTIONS

