

# PRODUCTS AND SERVICES GUIDE





# Bigfoot Crane Company Inc.

**B**igfoot Crane Company Inc. is a value-driven organization. We strive to be a leader in the high-angle materials handling industry by providing the best in industrial cranes, hoists, underhook accessories, services, and solutions.

With nearly 30 years of experience, we understand the challenges our customers face. We have developed our team, service, and product selection accordingly to ensure we can deliver meticulous quality and excellence every time.

Bigfoot has been operating out of Abbotsford, BC since the early 2000's and a distribution warehouse in Virginia since 2015.

As a growing company we pride ourselves on our culture, our customer

service, and our reputation. Our goal is to provide products and services that are industry leading and will keep clients coming back.

Our company moto is: Legendary Service and this moto lives in how each Bigfoot employee approaches their work and customer service.

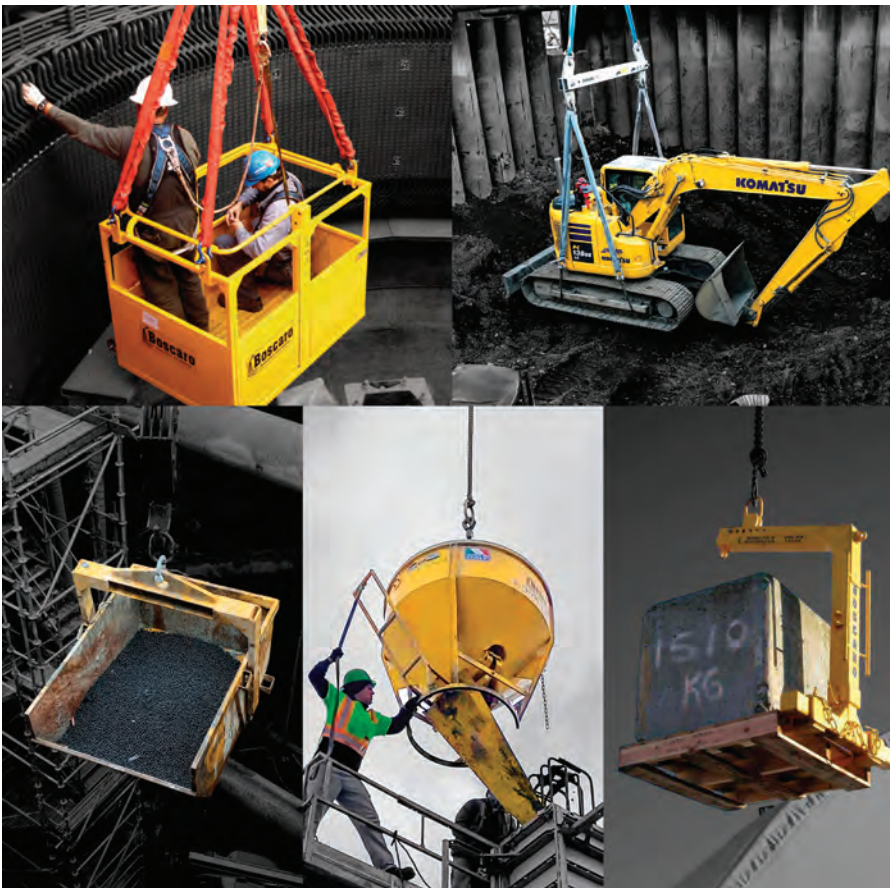
One of our key strategies is to provide our customers with a turn-key and inclusive vertical material handling experience including but not limited to:

- Tower crane rentals, sales & services
- Construction hoist rentals, sales & services
- Under hook crane accessories rentals, sales & service
- Self dumping bins
- Concrete buckets
- Auto leveling pallet forks
- Man-baskets
- Spreader bars and related rigging
- Wind safety systems sales & service
- Zone control rentals, sales & service
- Complete shop services to support all products we rent and sell
- Certified Crane & Hoist operator training facility covering all classes of cranes and hoists
- In-house engineering and project support



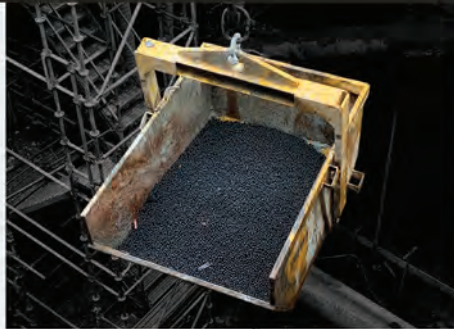
Our product and service lineup is focused on giving each of our customers a single go-to partner that they can trust and depend on for their entire project. We literally can provide with one phone call the solution our customers need without the need to talk to multiple suppliers. ■

For more, call 844.948.1876, or visit [www.bigfootcrane.com](http://www.bigfootcrane.com).





# OUR CRANE ACCESSORIES ARE PRETTY TOUGH!



## SELF-DUMPING BINS

Model	Capacity	Payload	Weight
A-400D	5.23 cu yd	17,637 lb	2,535 lb
A-600D*	7.85 cu yd	26,455 lb	3,527 lb
A-800D*	10.46 cu yd	35,274 lb	5,952 lb
A-1000D*	13.07 cu yd	44,092 lb	8,948 lb

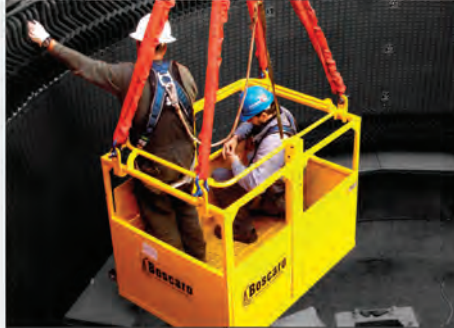
\* Comes with dual lift points



## CONCRETE BUCKETS

Model	Capacity	Height*	Weight*
C-50N	2,425 lb	3'8"	250 lb
C-99N	4,850 lb	4'2"	507 lb
C-150N	7,275 lb	5'0"	585 lb
C-200N	9,700 lb	5'0"	677 lb

\* Height and weight of attachments not included



## 2-MAN BASKETS

Model	CPP-G2A	Height	7'9"
Capacity	2 People	Height *Without roof	4'6"
Load Limit	645 lb	Bottom Weight	882 lb
Length	4'7"	Roof Weight	309 lb
Width	3'3"	EZ™ Test Weight	815 lb



## PALLET FORKS

Model	Capacity	Weight
MBRA-15E-12	3,300 lb	410 lb
MBRA-20E-12	4,400 lb	440 lb
MBRA-25E-12	5,500 lb	575 lb
MBRA-30E-12	6,613 lb	675 lb



## SPREADER BARS

Model	Length	Capacity	Weight
15T	4'-16'6"	3-15 tonnes	81-244lb
35T	6'9"-34'7"	7-30 tonnes	188-846lb
110T	8'-34'7"	27-110 tonnes	639-1,735lb

\* More than 6 possible configurations available per model

Supply & Service  
Across North America

1-844-948-1876

TALK TO AN EXPERT



# The BILCO Company

**B**ILCO offers Building Information Modeling (BIM) objects for the company's complete line of specialty access products. Family models allow you to select the material, size, and options for each product type to output a model that meets your product requirements. The objects are in Revit format and available for Roof Hatches, Automatic Smoke Vents, and Floor Access Doors in both single and double leaf design configurations.

## COMPANY NOTABLES:

The BILCO Company has served the building industry since 1926. During these years it has built a reputation among architects, engineers, specifiers, and the construction trades for dependability and for products that are unequalled in design and workmanship. BILCO, a wholly owned subsidiary of AmesburyTruth, which is a division of Tyman PLC, has been a pioneer in the development of specialty access products for commercial and residential construction markets.



an AmesburyTruth™ company

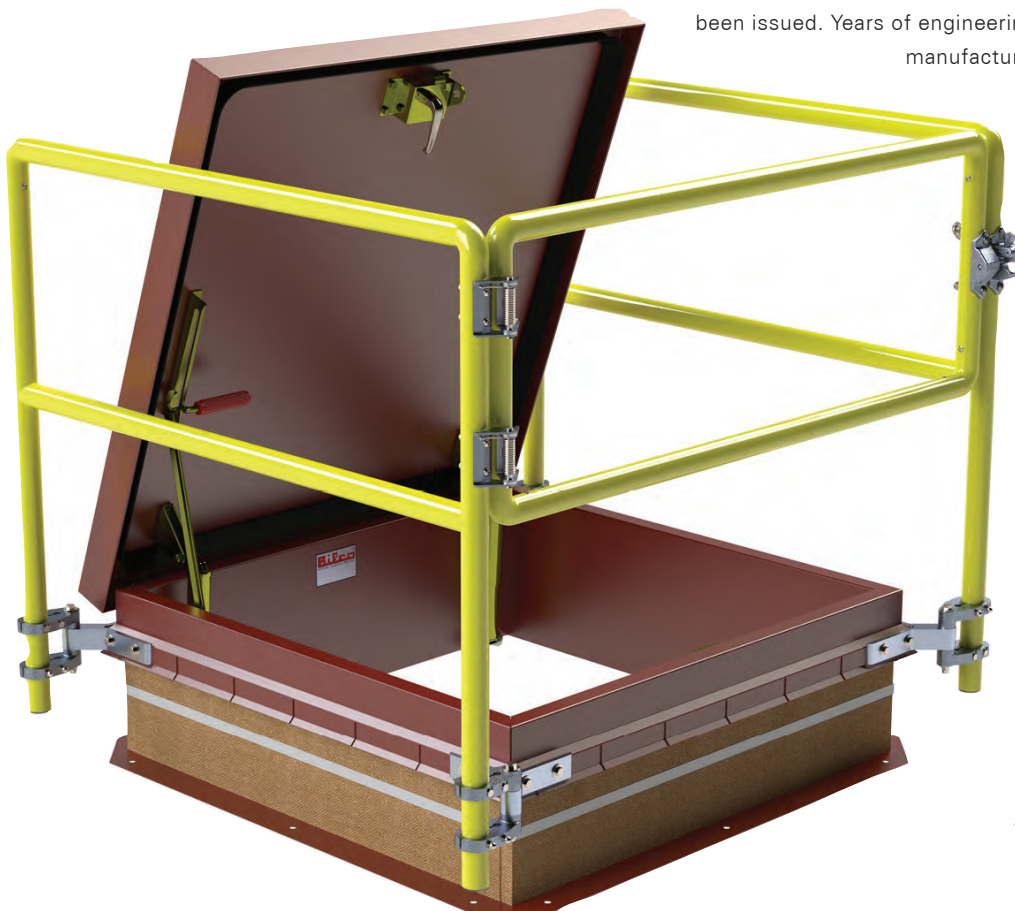
The BILCO Company continues to be the industry leader in the design and manufacture of specialty access products. In order to better serve its customers, BILCO has added manufacturing facilities and strategic distribution throughout the world, along with establishing an extensive international network of factory-trained representatives. These representatives, combined with BILCO's highly skilled and dedicated personnel, ensure a level of customer service that is unequalled in the industry. As the leader in design innovation, many of BILCO's products incorporate features for which numerous U.S. and international patents have been issued. Years of engineering experience, coupled with

manufacturing facilities utilizing the most

modern equipment available, allows BILCO to design and fabricate access products for virtually every application.

The BILCO Company is committed to producing access products that are unequalled in quality, design, and workmanship. BILCO products are fabricated to consistently high-quality standards to ensure complete customer satisfaction. As part of its commitment, BILCO has implemented a LEAN manufacturing quality and continuous improvement system that has achieved ISO 9001 certification. ■

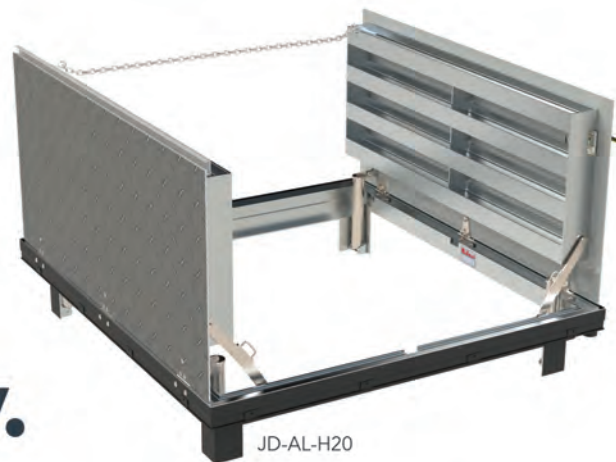
For more, call 800.366.6530,  
or visit [www.bilco.com](http://www.bilco.com).







# Proven. Quality.



For decades, BILCO products have provided dependable access to equipment stored underground or below/between building floors. While they may look like everyone else's on paper, our floor access doors are unequalled in quality, design and operation. Our engineered lift assistance ensures that every door, regardless of size or weight, can be easily opened and closed with one hand. Specify the product that not only is engineered and fabricated to the highest standards, but also survives the test of time.

**BILCO. Your source for superior access.**  
800.366.6530 [www.BILCO.com](http://www.BILCO.com)



**Experience.  
Innovation.**



# Double Coin Tires

## Excellence Available Coast to Coast

**D**ouble Coin's radial OTR tires first entered the North American market in 1992. Over the years, Double Coin continued to make steady advances in technology, while also improving their manufacturing processes and capabilities. In 2017, Double Coin opened one of the world's most advanced manufacturing facilities. This 3.6 million sq ft facility has the capacity to manufacture 1.8 million TBR tires and more than 50,000 OTR tires per year.

Today, Double Coin is a trusted OTR tire brand, and a growing number of contractors have chosen Double Coin OTR tires based on their superior performance and lower cost of ownership. What we promised years ago remains true today: The Smart Money is on Double Coin.

Headquartered in Monrovia, California, Double Coin radial OTR tires are manufactured and marketed by CMA, LLC, and they are an OEM fitment at major North American construction-equipment manufacturers. Double Coin has three warehouses strategically located across the U.S. to give you the assurance that the OTR tires you need can get to you quickly.

### A MATTER OF EXCELLENCE

We have a simple mission at Double Coin: excellence. In everything we do, in every aspect of our business, we work tirelessly to provide the highest level of customer satisfaction. That's our Mission Excellence promise, and it drives us to innovate and

integrate the latest tire technologies into every radial OTR tire.

Our OTR tires are built to work, move earth, and carry heavy loads in rocky, sandy and muddy terrains. Our tires deliver superior traction, proven performance, long-term retreadability, and an overall lower cost of ownership.

The REM-2 (E-3/L-3) radial OTR, for example, is built with an aggressive self-cleaning, non-directional tread design that makes it ideal in a wide range of OTR applications. It is engineered to deliver a smooth ride and superior traction in rocky, muddy and sandy terrains. The REM-2 is an OEM Certified OTR with an advanced casing design that delivers superior tire life and long-term retreadability.

Double Coin's REM-3 Skid Steer (SS) radial OTR tire is engineered for rugged and demanding environments. Its unique uni-directional tread design delivers maximum traction, optimum performance, and superior off-the-road handling, and can be counted on to deliver a low cost per hour.

### CUSTOMER FIRST

Mission Excellence is about a family of values that puts you the customer first. It means quality OTR products that deliver superior performance anywhere, anytime, in any off-road condition. It also means product availability, access to experienced representatives with intelligent solutions, and a Dealer Network that offers competitive pricing. Mission Excellence means more value.

With over 80 radial OTR SKUs available, Double Coin has the OTR tire to help your construction operation maximize performance and reduce operating costs. We're proud of our continued growth and industry acceptance. Our promise is to continue to help our customers and OEMs improve profitability by manufacturing OTR tire products of uncompromising quality, and by designing solutions that deliver ongoing value. ■

*To find out more about the REM-2 and REM-3 OTRs, or other quality OTR and TBR products, as well as our Mission Excellence promise, visit [www.doublecointires.com](http://www.doublecointires.com) or call 888.226.5250.*





# Available Coast to Coast



## Superior quality is close at hand

You're working around the clock and we have high-quality OTR tires in stock. The REM-2 OTR radial features an aggressive self-cleaning tread design, is engineered to deliver a smooth ride and superior traction.

The REM-3 OTR features a special uni-directional tread design for maximum traction in Off-the-Road skid loader applications. With 3 warehouses strategically located across the US, Double Coin delivers the tires you need, quickly.

Find a Dealer at:  
[www.DoubleCoinTires.com/dealers](http://www.DoubleCoinTires.com/dealers)

THE SMART MONEY IS ON



©2021 CMA, LLC.



# Express Blower, Inc.

## The Inventor. The Innovator. The Standard.

**E**xpress Blower, Inc. leads the pneumatic blower truck market with innovation, state-of-the-art systems, and practical experience, resulting in a greater number of large-size machines working in the field today than any other manufacturer. The mantra, "We are selling a business, not just a piece of equipment," is ingrained in Express Blower's culture and is reflected in the equipment and customer service provided to its customers.

### PRODUCTIVITY AND EFFICIENCY CONTRIBUTE TO THE BOTTOM LINE

With Express Blower machines, reduce the number of workers required for labor intensive, lower profit jobs such as mulching. The rest of the crew is now available to do more profitable work, such as irrigation or landscape construction. EB equipment also helps take the seasonal nature out of many businesses' workflow. While spring may be the busy season for landscape mulching, erosion control projects may pick up in autumn with work sometimes continuing throughout winter. Then there is year-round green roof material installation and playground

safety surface "refreshing" before and throughout the school year.

Because of the machine's production capabilities, you can naturally increase the number of jobs completed in a day while increasing your opportunity for repeat business by delivering a quick, consistent, professional service.

### INTRODUCING THE EB-60HO

Did we mention innovation? The newest member of the EB equipment family is the High Output (HO) model designed around the tried-and-true EB-60 model. The EB-60HO is similar in blowing capabilities to our MD models and is the most powerful of our PTO configured machines. Lighter weight than any MD model and with greater capacity than a TM-45MD, the EB-60HO gives you better payload which means more money in your pocket! This machine also has better ground clearance than the standard EB-60, has no auxiliary engine for easier maintenance, and is available with our new 250-gallon water system.

### NEW WEBSITE LAUNCHED

A completely new website was recently launched, reflecting the growth in both our



company and the industry. It includes more videos and photos, expanded machine and application data, simplified menus for a better user experience, and we made it much easier to reach out to us. Be sure to check it out at [www.expressblower.com](http://www.expressblower.com).

### DYNAMIC USED EQUIPMENT MARKET

Express Blower machines are built to last, and this longevity has resulted in a vigorous used equipment market. Recognizing that building new machines plus refurbishing used machines could strain factory and personnel capacity, EB partnered with Conveyor Application Systems, LLC (CAS) to assist in the refurbishment and sale of used EB machines. CAS is a Rexius Forest By-Products company which was the inventor of EB machines and the creator of Express Blower, Inc. Their knowledge and experience are a great asset. While customers speak directly with the EB sales team when purchasing new or used equipment, CAS is responsible for securing the used equipment inventory and refurbishing the machines to get them in sellable condition.

### CUSTOMERS FIRST

Express Blower claims the industry's most experienced and knowledgeable people in both sales and aftermarket product support and takes great pride in its superior customer service. Onsite training with equipment purchase, exclusive owner's conference, expert technical support, extensive parts inventory to maximize uptime and productivity, plus exceptional warranty coverage, are just a few of the reasons that EB continues to expand its customer base. ■



*Performance may vary depending on type and quality of material used, operator proficiency, and jobsite setup, requirements, and specifications. Express Blower, Express Mulcher, Terraseeding, and the Express Blower design logo are trademarks of Express Blower, Inc.*



# INTRODUCING... THE EXPRESS BLOWER® **EB-60HO**



**YOU DON'T NEED MORE PEOPLE...**  
**YOU NEED MORE MACHINE**

**REVOLUTIONARY.** The most powerful of our PTO configured machines, the High Output (HO) models have similar blowing power as our MD machines. Lighter weight than any MD model and with greater capacity than a TM-45MD, the EB-60HO gives you **better payload which means more money in your pocket!**

Available as an EB-45HO, EB-60HO or EB-110HO.

## **Why an EB-60HO?**

- It is an option to a proven system.
- Similar power to MD models.
- Greater capacity than a TM-45MD.
- Lighter weight than MD models.
- No auxiliary engine so less maintenance.
- Better ground clearance than the standard EB-60.
- Available with the **NEW 250 gallon** water system with controls.



## **CONTACT US TODAY**

541.434.7100  
800.285.7227

[www.expressblower.com](http://www.expressblower.com)  
[info@expressblower.com](mailto:info@expressblower.com)

© 2021. Express Blower, Terraseeding, and Express Blower design logos are trademarks of Express Blower, Inc.



# Gas Clip Technologies

## User Safety Uncompromised

**G**as Clip Technologies believes that quality & affordability go hand-in-hand, which is why they manufacture top-of-the-line gas detectors and accessories that meet every budget. Each product meets the highest standard of reliability and longevity to ensure that every user's safety remains uncompromised. Gas Clip's multi gas detectors are perfect examples.

### MULTI GAS DETECTORS

The Multi Gas Clip was Gas Clip's first multi gas detector, and it was also the first portable gas detector in the industry to utilize infrared technology to detect combustible gases (LEL). The continuous run time of the Multi Gas Clip is 2 months. However, its sisters—the MGC Simple and the MGC Simple Plus—have continuous run times of 2 years and 3 years, respectively. Additionally, after being charged and calibrated during manufacturing, neither the MGC Simple nor the MGC Simple Plus require recharging or routine calibration, although bump testing prior to every use is advised. Also, all three of these detectors are designed to identify the presence and level of hydrogen sulfide (H<sub>2</sub>S), carbon monoxide (CO), oxygen (O<sub>2</sub>) and combustible gases (LEL).

### SINGLE GAS DETECTORS

In turn, on the days that require a single gas detector, Gas Clip Technologies has two to choose from—the Single Gas Clip (SGC) and the Single Gas Clip (SGC) Plus. Both include superior sensor reliability along with adjustable alarm set points, a programmable six-digit detector ID code

and a 2-year battery life. However, the SGC Plus also includes a built in "hibernate" mode that allows users to place it in a rested state when not in use. It is available in two models—SGC Plus H<sub>2</sub>S for detecting hydrogen sulfide and SGC Plus CO for detecting carbon monoxide. The Single Gas Clip, on the other hand, comes in three different versions—SGC O<sub>2</sub> for testing oxygen levels, SGC H<sub>2</sub>S for testing hydrogen sulfide levels and SGC CO for testing carbon monoxide levels.

Each Gas Clip product meets the highest standard of reliability and longevity to ensure that every user's safety remains uncompromised.

### THE EXTERNAL PUMP

Nevertheless, whether a worker uses a multi gas detector or a single gas detector, simplicity and longevity are guaranteed as is compatibility with the newest addition to Gas Clip Technologies' collection of gas detection solutions—the External Pump. This accessory is a

motorized sampling pump that allows any Gas Clip diffusion detector—single gas and multi gas—the ability to take remote samples from up to 75 feet away, drawing air at 2 feet per second. Those who use the External Pump can also perform a manual block test before taking samples in order to ensure a clean and proper draw. Audio and visual alerts will inform the user of possible errors including blockages and a low battery charge. The battery itself is rechargeable using the specialized wall charger included with the External Pump.

Additionally, the sleek, ergonomic design of the pump allows it to sit comfortably in the user's hand, which helps prevent potential drops. However, an alligator clip allows the user to firmly attach the pump to their belt, jumpsuit, etc. as needed. Either way, if the device takes a tumble, the durable casing can withstand the fall as well as other harsh treatment. The External Pump comes with a 2-year warranty and will be available for pre-order in May. ■

**COMING SOON: the External Pump!**

**Allows any Gas Clip diffusion detector to take remote samples from 75 feet away.**

**Available for pre-order in May.**

For more information, visit [www.gascliptech.com](http://www.gascliptech.com) or call 972.775.7577.



**COMING SOON**  
Contact us **today** for more information.

**gas clip**  
technologies **External Pump**

FLOW

POWER



External  
Pump

## The External Pump

Give any Gas Clip diffusion detector the ability to take remote samples from up to 75 feet away.

**gas clip**  
technologies

Portable Gas Detectors You Can Count On  
gascliptech.com +1.972.775.7577 1.877.525.0808





# Hurricane Ditcher Company, Inc.

## Now Offering Maddock Line

In September 2020, Hurricane Ditcher Company, Inc. acquired Maddock Corporation, which manufactures roadside maintenance equipment for the construction industries and state and county governments. With the acquisition of the Maddock product line, Hurricane Ditcher positioned itself as a leader in the water management and road construction industries.

Both companies began in the mid 1980's and serve a variety of customers in 35 states and 14 countries, offering more than 20 different models to help solve a variety of water management and road maintenance issues for their customers.

### THE MADDOCK LINE

The Maddock line offers backhoe and excavator mills, roadside ditchers, an asphalt recycler, berm cutter, and rotograder. The backhoe and excavator mills are designed to cut up to 8 inches in depth in ½-inch increments. They are an effective tool for asphalt, or concrete cuts and the grinding of shelf rock, or outcroppings, in construction work.

Maddock roadside ditchers are excellent for forming a v-sided, flat bottom ditch 16 inches wide at the base, and 27 inches deep in one pass. The RD160 can cut to a maximum depth of 60 inches below the road base, and has a maximum right-side out-reach of 84 inches.

The asphalt recycler is excellent for optimum performance for the partial-depth, cold, in-place recycling method of road rehabilitation. The gradation of the milled material is the single most important factor for consistent quality in the recycling process.

The berm cutter is a pull type, engine-driven machine designed to pulverize and discharge a high berm at the road's edge. It can average 3 to 5 miles per day, with one man and one machine, in a variety of weather conditions.

The rotograder does a superior job surface milling, pulverizing gravel roads, performing surface milling of high joints on rough or grooved asphalt, and cutting and pulverizing road shoulders. This multi-surface, self-powered milling attachment is designed to attach to a motor grade.

### THE HURRICANE LINE

The Hurricane line offers eleven models of equipment for reshaping waterways and terraces, cleaning roadside ditches, and constructing surface drainage ditches, using your own farm tractor. These include pull type machines, sidearm, and 3-point hitch machines, all designed for farm or roadside drainage.

The 3-point hitch machines create and clean out drainage ditches. Some units go straight behind the tractor and some are offset behind the tractor tire.

The pull type machine is excellent as an economical way to make surface drainage ditches, reshape waterways, and rebuilt terraces using your own farm tractor.

The model 24 moves over 1,000 cubic yards of dirt per hour with 150 hp tractor.

The side arm units work beautifully for cleaning and maintaining roadside ditches and other ditches that cannot be safely straddled with other ditching equipment. The sidearm units at average clearing 1 mile of ditch every hour. ■

Whatever your needs are for drainage, road recycling, or milling equipment Hurricane Ditcher can supply your needs. Their management team has the knowledge and expertise to help you with any of your concerns or issues.

**Let Hurricane/Maddock solve your needs with ditchers, road recyclers, berm cutters, or backhoes and excavator mills.**

**Contact us today at 812.886.9663 for more information or to schedule a demonstration with one of our more than 200 dealers across the United States or Canada.**



[sales@hurricane-ditcher.com](mailto:sales@hurricane-ditcher.com)  
[www.hurricane-ditcher.com](http://www.hurricane-ditcher.com)  
[www.maddockcorp.com](http://www.maddockcorp.com)



# HURRICANE



## DITCHER



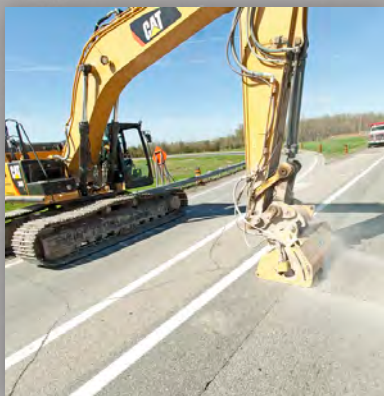
### **BACKHOE MILL**

**Available in 12, 18, & 24 cutting widths**

The Backhoe Mill is a useful addition to the attachment lineup for your machine. It is an effective tool for asphalt, or concrete cuts and the grinding of shelf rock, or outcroppings, in construction work. The depth gauge allows the operator to pre-select the cutting depth from flush to max depth, in 1/2" increments. Connected to the backhoes remote hydraulic system, the backhoe mill allows for a maximum cutting depth of 8 inches.

### **MODEL 48E BERM CUTTER**

The Model 48E Berm Cutter is a tow-type, engine driven machine designed to pulverize and discharge a high berm at the road's edge. It can average 3 to 5 miles per day, with one man, and one machine, in a variety of weather. The shoulder vegetation is pulverized by the horizontal cutter, then discharged to the right into the field. When configured for left-hand discharge, the material is deposited onto the roadway in a window for loading, or broadcast across the roadway on the gravel roads to recover the stone.



### **EXCAVATOR MILL**

**Available in 36 & 48 inch cutting widths**

The Excavator mill is a milling attachment designed for hydraulic excavators up to a 35 ton rating. When connected to the excavator's remote hydraulic system, the excavator mill becomes a versatile tool for asphalt repair, concrete cuts, and grinding of shelf rock or outcroppings. The depth gauge allows the operator to pre-select the cutting depth from flush to max depth, in 1/2" increments. In addition, the machine allows for a maximum cutting depth on 8 inches, is unmatched in cutting depth capabilities for milling attachments, and is one of the few milling attachments that can cut above grade ( useful on steep slopes ).

**[sales@hurricane-ditcher.com](mailto:sales@hurricane-ditcher.com)**

**[www.hurricane-ditcher.com](http://www.hurricane-ditcher.com)**

**[www.maddockcorp.com](http://www.maddockcorp.com)**

# Isuzu Commercial Truck of America, Inc.

## The 2022 Isuzu F-Series: More Power. More Class.

Isuzu recently announced its 2022 Isuzu F-Series lineup, and it has a lot to offer the construction industry. The new lineup will have two models: the Class 6 FTR (25,950 GVWR) and the Class 7 FVR (33,000 GVWR). You can also get a de-rated Class 6 version of the FVR with a 25,950 GVWR. And, while payload capacity is key in construction, that isn't the whole story!

### CUMMINS B6.7

Isuzu has added the most popular engine ever built by Cummins. The Cummins B6.7 has been in production for nearly 40 years with billions of miles driven. This kind of legacy is a testament to the engine's power and durability in the medium-duty segment.

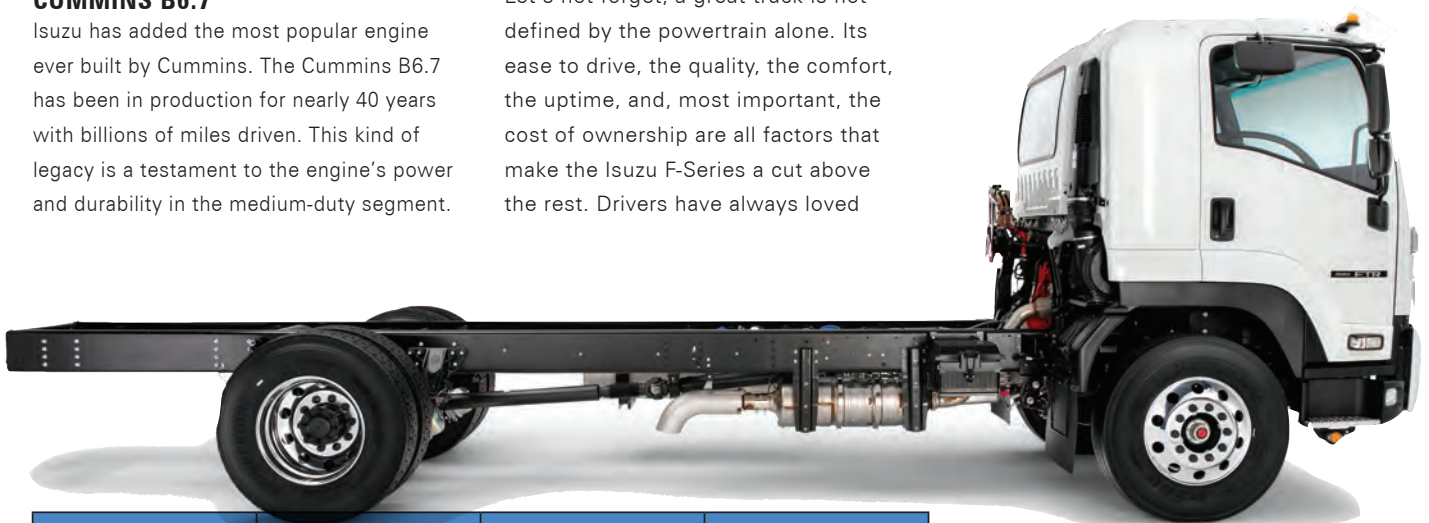
The B6.7 is a 6.7-liter turbocharged inline 6-cylinder diesel engine. With 260-hp, 660 lb.-ft. of torque and an Allison 2000-series transmission (includes a PTO), it will easily move heavier payloads through urban environments and over the road.

### #1 SELLING LCF TRUCK SINCE 1986!

Let's not forget, a great truck is not defined by the powertrain alone. Its ease to drive, the quality, the comfort, the uptime, and, most important, the cost of ownership are all factors that make the Isuzu F-Series a cut above the rest. Drivers have always loved

Isuzu's maneuverability and quality, and this new Isuzu F-Series will only add to that legacy.

Isuzu has been the #1 selling LCF truck in America since 1986. That's 35 years! That kind of accomplishment is not by coincidence. Isuzu has a great nationwide dealer network, and its customers are loyal to the



	FTR	FVR (De-rate)	FVR
<b>Class</b>	<b>6</b>	<b>6</b>	<b>6</b>
<b>GVWR</b>	25,950 lbs.	25,950 lbs.	33,000 lbs.
<b>GCWR</b>	30,000 lbs.	30,000 lbs.	33,000 lbs.
<b>Front GAWR</b>	12,000 lbs.	12,000 lbs.	12,000 lbs.
<b>Rear GAWR</b>	19,000 lbs.	21,000 lbs.	21,000 lbs.
<b>Engine</b>	Cummins B6.7 Turbocharged Inline 6-Cylinder (6.7L - Diesel) 260 HP @ 2400 RPM/660 lb.-ft. Torque @ 1600 RPM		
<b>Transmission</b>	Allison 2550 RDS	Allison 2500 RDS (no park pawl)	Allison 2500 RDS (no park pawl)
<b>Final Ratio</b>	5.57 4.88 (low pro)	5.57 (N/A low pro)	5.57 (N/A low pro)
<b>Alternator</b>	160-amp		
<b>Air Compressor</b>	17 CFM		
<b>Exhaust</b>	Cummins Single Module After-treatment 10-Gallon DEF Tank		
<b>Brakes</b>	Air - S-Cam Drum		
<b>Tires</b>	11R22.5 (low pro available)	11R22.5 (no low pro)	11R22.5 (no low pro)
<b>Wheelbases</b>	8	8	8

brand. That means they have bought multiple **trucks** over the years, and that kind of success means you too can be assured this new line-up Isuzu F-Series trucks will be among the best trucks available. ■



**Production starts this fall,  
so get in touch with your Isuzu dealer  
and get your Isuzu truck ordered today.**

***This is going to be one hot truck!***



**ISUZU**  
**TRUCK**

# ***COMING SOON!*** ***THE NEW 2022 F-SERIES***

The new Isuzu F-Series trucks will include the Class 6 FTR and the Class 7 FVR. Both will be equipped with the Cummins B6.7 diesel engine. Find out more by watching the announcement on our website at [www.isuzucv.com/en/fseries/new](http://www.isuzucv.com/en/fseries/new).

For more information regarding availability,  
please see your local Isuzu dealership.



***COMING SOON TO AN***  
***ISUZU DEALER NEAR YOU!***

Vehicles are assembled from component parts manufactured by Isuzu Motors Limited and by independent suppliers who manufacture such components to Isuzu's exacting standards for quality, performance and safety. Please see your authorized Isuzu dealer for additional details. © 2021 ISUZU COMMERCIAL TRUCK OF AMERICA, INC.

# Isuzu Motors America LLC

Isuzu. Caring people providing The Power behind it all.

Today, with everyone experiencing worldwide uncertainty with pandemic proportions, we are here to support your North American power requirements, from agricultural, industrial, medical, and construction, by providing environmentally responsible and critical power products for your specific applications. We are always available to understand your needs as they relate to your business and that of your customers. We know these are difficult times but, our problem solving and product support can make a difference in your business challenges.

## GLOBAL LEADER OF INNOVATIVE POWER

There are more than 28,000,000 Isuzu engines spanning over 100 countries. Not only does Isuzu Diesel validate specific off-road application usage, we develop Power Units for unlimited applications. We have built and maintained a professional organization and back our products with warranties that go up to 5 years/5,000 hours providing power solutions that work.

Isuzu Diesel ensures the most advanced performance and services, with a goal to become the new international standard of excellence in product development, quality, and customer support.

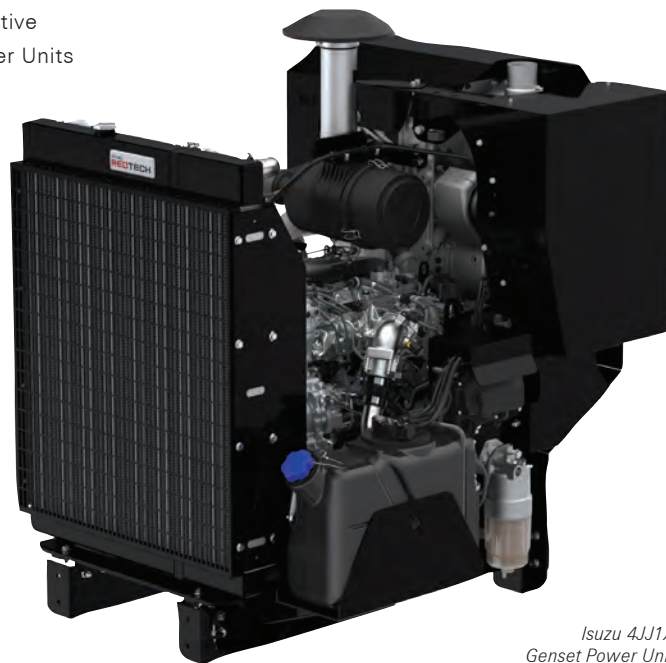
## NEW GENSET READY, ALTERNATIVE FUEL AND DUAL-FUEL POWER UNITS

Our newest Power Units are pre-tested, validated, and GenSet ready. Equipped with adjustable bolt-on mountings for ease of installation for multiple generator applications. These GenSet ready power units save customers time, money, and

resources. Our Alternative Fuel Engines and Power Units use natural gas or propane and can be equipped with a Dual-Fuel System to simply reconfigure the fuel source and eliminate downtime. These Dual-Fuel Power Units are being recognized as industry leading for their innovative ability to change from one fuel to another, while on location, without shutting down an entire jobsite to change an available fuel source. For example, in Louisiana where higher levels of hurricanes occur and natural gas gets interrupted. These Dual-Fuel Power Units can be switched off and restarted with a flip of a switch to easily change to a readily available propane tank.

## ISUZU PRODUCTS, BUILT TO LAST

Isuzu has proven to be Reliable, Eco-friendly, Durable, and Technologically Advanced. Our Tier 4 and Stage V Engines and Power Units, branded under Isuzu REDTech™, provide quiet, low maintenance and fuel-efficient solutions for existing and new applications. From 6.7kW to 397kW these Engines and Power Units use the latest after treatment DOC or DOC+SCR, with vertical or horizontal SCR for design flexibility. Every Isuzu Engine or Power Unit is precision tuned for its highest



Isuzu 4JJ1X  
Genset Power Unit

efficiency, while reducing oil and fuel consumption. A long-lasting and robust fuel injection system incorporates excellent fuel economy and extended service life. Stringent criteria to lower NVH (noise, vibration, harshness) are engineered into every Isuzu product. Each application is designed to meet customer specifications and is engineering validated for each environment. Isuzu REDTech™ Engines and Power Units with reliable performance, durability, and high thermal efficiency help reduce downtime. All Isuzu Diesel products are supported by Genuine Isuzu Parts, a Distributor and Dealer network, along with dedicated professionals to ensure power solutions that are reliable, eco-friendly, durable, and technologically advanced. ■

[www.IsuzuEngines.com](http://www.IsuzuEngines.com)  
[www.IsuzuREDTech.com](http://www.IsuzuREDTech.com)





**4LE2X**  
F/F Engine



**new 4JJ1X**  
1800 RPM Tier 4  
Genset Ready Power Units



**new 4HV1 DUAL-FUEL**  
Natural Gas / Propane

# ISUZU

The power behind it all.™

Isuzu Engines and Power Units offer clean, reliable power, and current tier emissions to perform in all kinds of environments. From the 4LE2, a proven workhorse in thousands of critical applications. To our 4HV1 Dual-Fuel Power Unit that can eliminate downtime when changing an alternative fuel on location. To our newest 4JJ1 generator set ready Power Units that are completely validated to help save OEMs and Distributors valuable design engineering time.

**Contact your local Isuzu Distributor  
or call us direct at 734.582.9470.**

[www.IsuzuEngines.com](http://www.IsuzuEngines.com)  
[www.IsuzuREDTech.com](http://www.IsuzuREDTech.com)



**ISUZU**  
**REDTECH™**  
Reliable | Eco-friendly | Durable | Technologically Advanced

# JLG

## Big Productivity That Goes Where You Go

Introducing the SkyTrak® 3013 ultra-compact telehandler from JLG. This ultra-compact telehandler lifts 2,700-lb and, weighing in at only 5,280-lb, can easily fit on a standard tow-behind trailer pulled by a pickup truck. The SkyTrak 3013 telehandler is designed to meet the needs of landscapers, hardscapers, and contractors on urban and residential construction sites where space is limited. Boasting a greater lift height, increased up-and-over reach and enhanced terrainability, with this telehandler, you can enjoy a machine that masters multitasking—as well as you do.

### REPLACE SKID STEERS

The SkyTrak 3013 is built to be the best solution for handling and transporting materials in small spaces. When compared to skid steers, the new ultracompact machine will offer better reach into truck beds, trailers and over obstacles, in addition to better lift height for single story houses and dump trucks.

The 3013 boasts more ground clearance than a skid steer, resulting in better terrainability over uneven surfaces. Pair that with an oscillating rear axle and both you and your load are in for a smoother ride. The cab design is spacious, and the placement of the boom gives operators a 360-degree view. Plus, thanks to the 3013's rear wheel steering you can enjoy less surface disturbance than you would with the skid steer's counter-rotating steering.

### FEATURES AND OPTIONS

The SkyTrak 3013 is available with a variety of options, including open and

fully enclosed cabs, a cold weather package, work lights, universal hydraulic skid steer coupler, and a variety of tires. The new model also comes standard with features such as 4-wheel drive, rear pivot steering, a hydrostatic drive system and longitudinal stability indication (LSI),

*Sized to move. Built to work. The SkyTrak 3013 gets it done.*



all supported by a Kubota V-1505 diesel engine with 24.8 hp.

### PRICED TO WORK

Simple design and practical technology deliver value-based costs that focus on getting the job done. Overall, when it comes to keeping you safer and maximizing productivity, the SkyTrak 3013 telehandler delivers a value that goes beyond cost.

### MINIMAL SERVICE

Practical design and durability give the SkyTrak 3013 telehandler the capability to maintain peak functionality on the toughest work sites. Easy-to-access components and a single lift and compensation cylinder allow for maximum serviceability. The build and capacity of this telehandler ensure it can go where it needs to go and get what needs doing done to keep you working efficiently and on schedule mile after mile. ■



# ALL-NEW ULTRA COMPACT SKYTRAK® TELEHANDLER



**MANEUVERABILITY, REACH,  
TRANSPORTABILITY**

## **Introducing the SkyTrak® 3013 Ultra-Compact Telehandler**

Whether you are doing landscaping, light construction or loading and unloading trucks, you need a telehandler that can multi-task. With its 2,700-lb capacity and 13-ft of lift height the 3013 is designed for jobs that require more up-and-over reach, while its compact size provides excellent maneuverability in confined spaces. Best of all, it can be easily transported with a pick-up truck and trailer thanks to its 5,280-lb weight.

See what you can get done with the new ultra-compact telehandler: [JLG.com](http://JLG.com)





# LIGCHINE

## Laser-guided Screeds

Ligchine is a global leader in innovative laser-guided and 3D GPS/LPS-guided concrete screeds. Since its founding in 2007, the company has rapidly expanded its position in the market and now offers a full line of automated concrete screeding machines that service flatwork companies from small owner-operated companies to large global concrete contractors. The company's headquarters, engineering and manufacturing are located in the United States, and in addition to a direct sales force in the US, the company has an extensive network of international dealers and partners to serve customers anywhere in the world.

### WHAT WE DO

We design and manufacture reliable and cost-effective concrete leveling machines known as "laser-guided screeds." We are also a leader in innovative, lightweight drive-in systems for upper deck concrete and slab-on-grade screeding applications.

Our screeds are production machines specifically developed for commercial flatwork and can dramatically reduce dependence on labor, which is often in short supply, while yielding a higher-quality end product.

### OUR EQUIPMENT

Ligchine recently introduced the SCREEDSAVER ELITE™, the most complete, mid-priced boom screed developed by the manufacturer.

This new and innovative machine introduces all new key features including:

- The game-changing, SIDE-SHIFT SCREED HEAD makes it easier to screed around stick-ups in the slab with pinpoint accuracy.
- ALL-WHEEL DRIVE for unmatched mobility and power.

- HEAVY-DUTY BOOM sections reaching out to 18 feet for greater stability and accuracy.
- NARROWER CHASSIS for easy access through restricted entries.
- New, more ergonomically friendly REMOTE CONTROL.
- 360° ZERO-TURN CAPABILITY and EASE OF TRANSPORT with a ¾ ton pickup truck are signature features of all Ligchine boom screeds.

The SCREEDSAVER ELITE™ is the most innovative laser-guided screed machine to join Ligchine's SCREEDSAVER family of machines.

Ligchine screeds are production machines specifically developed for commercial flatwork and can dramatically reduce dependence on labor, which is often in short supply.

In 2019, Ligchine introduced the SPIDERSCREED™ – a compact, and maneuverable drive-in system designed for upper deck concrete and slab-on-grade screeding applications. The drive-in SPIDERSCREED™ machine was designed to be lightweight and powerful, featuring a 100% TIG welded tubular cage design that keeps overall weight down to approximately 1,280 lbs. Its patent-pending Versa-Drive system, independent zero-turn drive, up to 90° horizontal drive, and lateral drive make it a unique drive-in screed. The SPIDERSCREED™ features Ligchine's patented machine leveling system to ensure flatter floors and greater compaction than simple screed head only leveling systems.

Ligchine introduced the SCREEDSAVER II™ machine in 2008 as the world's most competitively priced boom-operated screed ever offered to the industry.

SCREEDSAVER II™ includes a zero-turn drive system, making it the perfect companion for cut-up jobsites and spaces that no other boom screed would attempt to complete. The wireless remote-controlled SCREEDSAVER II™ achieves world class FF/FL numbers that only a stationary boom operated screed can reliably produce.

Ligchine developed the "large line" sized boom screed in 2012. The SCREEDSAVER MAX™ 200 is the workhorse of the Ligchine fleet. SCREEDSAVER MAX™ 200 integrates the technologies of the standard SCREEDSAVER II™ with the added features of front wheel drive and rear

wheel steering, a 90° manual pivoting drive frame, and Kubota's 25 hp D902 diesel motor. Like all Ligchine screeds, the MAX 200 is a wireless remote-controlled screed.

Introduced in 2017, SCREEDSAVER PRO™ 220 offers the best of all worlds. The PRO 220 combines the accuracy and durability of our standard MAX 200. Unique to the PRO 220 is the inclusion of our patented zero-turn drive system that allows BOTH the upper boom frame AND the lower drive frame to independently spin 360°. It also features our automated concrete additive spray bar system integrated into the screed head. ■

***Start saving dollars on your labor today and increase your profitability tomorrow with a SCREEDSAVER machine.***

INTRODUCING:

## SCREEDSAVER ELITE



# THE GAME-CHANGER

The **SCREEDSAVER ELITE** is Ligchine's newest laser-guided concrete screed machine to join the **SCREEDSAVER** line of innovative, labor-saving machines.

New key features include:

- **ALL-WHEEL DRIVE** for unmatched mobility and power.
- **HEAVY-DUTY BOOM** sections reaching out to 18 feet for greater stability and accuracy.
- The game-changing, **SIDE-SHIFT SCREED HEAD** makes it easier to screed around stick-ups in the slab with pinpoint accuracy.
- **NARROWER CHASSIS** for easy access through restricted entries.
- New, more ergonomically friendly **REMOTE CONTROL**.
- **EASE OF TRANSPORT** with a  $\frac{3}{4}$  ton pickup truck.

START SAVING DOLLARS ON YOUR LABOR TODAY &  
**INCREASE YOUR  
PROFITABILITY** TOMORROW.

See more at [www.Ligchine.com](http://www.Ligchine.com)  
sales@Ligchine.com | 812-903-4500

**LIGCHINE**

BEYOND LEVEL



# TireSocks Inc.

## Surface & Equipment Protection At A Higher Level

Most people associate construction equipment with dirt and grime, but TireSocks Inc. set out to change that mindset. With a range of products including TireSocks, DripDiapers, AerialShields, AerialJackets, SafetyPads, and more, TireSocks Inc. provides products designed to keep indoor surfaces clean and to improve machine longevity through protection from the elements and typical construction wear and tear.

Surface and equipment protection are key to keeping jobsites and machines running smoothly. Being prepared from the start of a project inevitably saves time and money.

Whether you own your machines or rent them, equipment is a substantial investment for any contractor and worth protecting. AerialJackets and AerialShields provide solutions to avoid budget overages due to equipment damage, downtime and cleaning costs.

### AERIALJACKETS®

AerialJackets protect scissor lifts, control boxes and boom baskets from indoor and outdoor contaminants such as dust, grime, water, snow, ice, sun, and wind. All of these elements threaten the equipment contractors depend on. If even one piece of equipment is damaged or out of service, it can significantly impact a project. As a contractor, it is important to keep the equipment that is on your jobsite, as well as equipment not currently in use, protected.

AerialJackets are constructed of heavy-duty, water-resistant material, are easy to install and include a retractable lock to prevent unwanted use and theft. The design allows easy access to controls and charging ports without removing the cover. In addition to the protective applications, AerialJackets are a great option to keep machines that must be stored on a jobsite from becoming an eyesore. This downtime can be utilized as a marketing opportunity by adding your full color logo to the product.

### AERIALSHIELDS®

Dirty equipment can be attributed to many sources, but when it comes to interior construction, certain trades tend to be the biggest offenders. TireSocks created its newest product, AerialShields, to provide a cost-effective solution to combat clean-up costs for the messiest of trades.

AerialShields are ideal for painting and drywall projects. They guard equipment from overspray, spills and splatters without sacrificing functionality and warning label visibility. This product is lightweight and easy to install. AerialShields feature a hook & loop seal surrounding the machine's entry along with a removable door. These two features make entry and exit possible without removing the shield. A bungee base secures the AerialShield to the bottom of the platform. The product's design also allows coverage for platform extensions.

AerialJackets and AerialShields are available to fit most boom & scissor lifts. ■

## AerialJackets®

AerialJackets are constructed to allow easy access to controls and charging ports.



Control Box  
AerialJackets



Scissor Lift  
AerialJackets

**We've Got You Covered!**



**AerialShields®**

\*Patent Pending



TireSocks®



DripDiapers®



SafetyPads®



CasterSocks®

Order Online! [www.TireSocks.com](http://www.TireSocks.com)



# AMS-Merlo



Ready to meet any heavy load handling job in any industry with a specific height and weight requirement is the Merlo P65.14HM telehandler. Compact and high performing, the P65.14HM telehandler has a maximum operating capacity of 14,400 lbs with a maximum lift height of 45 ft, 7 inches. Load capacity at the maximum lift is 8,800 lbs. The maximum reach of 29 ft, 5 inches easily supports up to 3,500 lbs.

This high-capacity telehandler packs a lot of power and versatility into its compact (19'4" x 8'3" x 9'4") size. The Iveco 4 cyl. diesel delivers 170 hp. The P65.14HM travels quite well at 25 mph thanks to its CVtronic hydrostatic transmission. The 4WD with three steering modes ensure nimble maneuverability on every jobsite.

This enclosed FOPS and ROPS cab is mounted on isolation pads to reduce noise and vibration. The wide, split-door leads into a spacious first-class operation center with heat and AC. Ergonomic seating is standard. The dashboard, with its automotive look and feel, is engineered for quick fingertip access to all the controls. The electronic joystick is comfortably easy to use. The machine shuttle is located on the joystick and the steering column. The low pivot boom coupled with over 42 sq ft of glass ensures the operator has a continuous (360°) view of the machine, the surroundings, and the load at all times. Three windshield wipers—front, back, and roof—are standard.

The automatic frame leveling ensures a perfect vertical lift even on a slope. Boom

side-shift enables an operator to precisely move the boom to the left and the right for safe load placement at height.

The MDCD (Merlo Dynamic Load Control) synchs up with a large 10.1-inch color display that shows, in real time, attachment recognition, the machine's geometric configuration, boom extension, angle, and other working parameters. Plus, the no flex, ground engaging boom's Tac-lock system is safely controlled from the cab for quick, safe connection of a wide array of attachments such as buckets, jibs, hooks, winches, and platforms.

Merlo telehandlers are available through local dealers. AMS-Merlo the distributor of Merlo telehandlers has two locations to serve you: Rock Hill, South Carolina and Olathe, Kansas. ■

**MERLO**

**BETTER MACHINES**

**ROTO**

**TELEHANDLER SALES & RENTALS**

**AMS-MERLO.COM**  
**INFO@APPLIEDMACH.COM 803-327-4949**

**TWO LOCATIONS TO SERVE YOU**  
**ROCK HILL, SC & OLATHE, KS**

# Carlisle TyrFil

Off-the-Road (OTR) heavy industrial and commercial vehicles are only as good as the performance of the tires they're riding on. Any piece of essential equipment that's vital to the construction space—be it a bulldozer, telehandler, or skid steer loader—depends on the reliability of safe, durable tires that won't go flat on the job.

An unexpected tire flat on any one of these vital workhorse machines can disrupt productivity and throw a project manager's timeline—and budget—quickly off the rails. After all, transportation and earthmoving equipment plays an absolutely integral role in keeping production rolling on any flourishing construction site. No operator wants the day's agenda to grind to a halt due to a tire-related mishap. That's a situation that—depending on the size and

weight of the large equipment involved—can be costly, cumbersome, and even dangerous to remedy in the field.

Solid aperture tires are impervious to tire flats, but are expensive, difficult to maneuver on steeper inclines, and deliver a bumpy ride that's fatiguing to drivers. Pneumatic tires offer a cushioned ride but are highly vulnerable to punctures.

Polyurethane tire—or “foam”—fill technology delivers a viable technology alternative that's affordable, safe, and logistically feasible for OTR equipment operators. Polyurethane-filled pneumatics literally glide over typical worksite debris such as sharp rocks, nails, broken glass, and rebar. They offer a 100% flatproof solution that keeps OTR tires protected no matter how rigorous the jobsite is.

## TyrFil™ Celebrates Five Decades in the OTR Tire Industry

Carlisle TyrFil, the leading flatproofing technology brand, first launched in 1971. Through its pioneering use of urethanes to create an impenetrable, sustainable elastomer core for OTR tires, it has helped to evolutionize the industry. Celebrating its 50th Anniversary this year, TyrFil has enabled thousands of construction managers and contractors to glean better performance from the transportation systems that are integral to a streamlined, productive worksite. ■



## “Another flat, literally 15 feet from finished!”



### TyrFil™—When There's No Good Time For Downtime

#### Optimal Safety & Performance

Even in the most hazardous environments, tires filled with TyrFil™ will never go flat. Despite cuts and punctures, filled tires will keep performing—increasing productivity and eliminating costly downtime for field operators.

#### Eliminate Flat Tires Forever

- TyrFil™, a polyurethane material, is pumped into OTR vehicle tires, replacing all the air.
- TyrFil cures into a flexible, durable filling that eliminates flats and acts as a shock absorber, providing a smoother, safer, flatproofed ride.

Keep going.  
Go filled.



(800) 821-4147 • [www.CarlisleTyrFil.com](http://www.CarlisleTyrFil.com)



# Carnie Cap, Inc.

Carnie Cap offers the cutting edge in impalement protection combined with ease of installation, versatility, and cost savings compared with other rebar protective devices. Carnie Caps are national OSHA compliant, CA OSHA, and ME approved. Carnie Caps are designed to hold 2x4 or 2x6 pieces of lumber (double the thickness in CA) suspended above the exposed rebar. When a fall occurs, the force of the impact is distributed over the entire length and width of the lumber rather than the usual 16 square inches offered by other compliant rebar caps, making these caps extremely effective in preventing impalement.

The Carnie Caps are cost effective in several ways:

- The Caps hold the lumber in place using only 2 Caps per 8 ft of rebar (3 caps/8 ft CA). This eliminates having to use one cap per each piece of rebar.
- These caps are rarely knocked off, so neither money nor precious time will be wasted searching your jobsite for lost caps.
- These caps are reusable for up to 2 years.

As for versatility:

- The Carnie Cap system can be used in horizontal, vertical, or incline positions.
- The company offers two sizes of caps. The 2x4 size works with rebar from size 4 through size 9 and the 2x6 size caps works with rebar from size 8 through 16.

## Innovative Rebar Impalement Protection

Carnie Caps are made in the USA and ship in boxes of 100 from Moline, Illinois, Monday through Friday. Ask about quantity specials. You can also access the website for additional information, such as local distributors in your area, installation instructions, and safety articles. Be sure to check out the company mission statement and policies. Around Carnie Cap, the new motto is "We are proudly preventing human shish-kebob!" ■

For more information, visit

[www.carniecap.com](http://www.carniecap.com)

## CUTTING EDGE IMPALEMENT PROTECTION

**CARNIE CAP is the most effective way to cap exposed rebar while keeping your workers safe and on the job.**

Patent #5826398, 6073415



National OSHA Compliant • CAL-OSHA Approved

**ORDER TODAY!**

**(888) 743-7725**

[www.carniecap.com](http://www.carniecap.com)

✓ WORKS IN HORIZONTAL, VERTICAL & INCLINATION APPLICATIONS

✓ SAFELY DISTRIBUTES WEIGHT ACROSS ENTIRE SYSTEM

✓ ASSEMBLE WITH 2X4 OR 2X6 LUMBER ALREADY ON SITE

✓ NO MORE CAPPING EVERY REBAR!



# Cooper Tire & Rubber Company

For construction fleets operating in conditions that require extra grip and traction, the Cooper Tire WORK Series™ All Weather Drive (AWD) features an aggressive tread pattern to maximize traction in all weather conditions.

The Cooper® WORK Series™ AWD has an open shoulder design with tightly packed center tread blocks that are highly siped. The full-depth 3D sipes enhance traction, while interlocking to maintain tread stability while cornering.

The tire is SmartWay verified and blends excellent fuel efficiency with long miles to removal due to 26/32nds of tread depth and a wide footprint. The Cooper® WORK Series™ has wide snow grooves separating the three inner tread blocks with the outside ribs. This allows snow to pack in the tire, enhancing traction. The tread blocks are staggered and zig-zag to promote optimum traction in all weather conditions, while shoulder pockets provide additional traction “bite” in tough driving conditions.

To ward off irregular wear and enhance performance, the new tire features shoulder tie bars to provide stability to the shoulder ribs, allowing for a good balance of traction and irregular wear resistance. Stone ejectors, located between the tread blocks, help resist stone drilling while helping to maintain casing integrity.

Built around a four steel-belt casing, the Cooper® WORK Series™ AWD tire is highly retreadable and features an industry-leading full replacement value warranty for the first 50 percent of treadwear. The tire is available in three sizes: 295/75R22.5 LR G, 11R22.5 LR H, and 11R24.5 LR H. ■

For more, visit [coopertrucktires.com](http://coopertrucktires.com).

## High Traction Cooper Tire WORK SERIES™ AWD Tire

### HIGH PRIDE OF OWNERSHIP

### STARTS WITH LOW COST OF OWNERSHIP



WORK Series™ ASA

WORK Series™ ASD

WORK Series™ AWD

The Cooper® WORK Series™ has been designed and engineered with proprietary technology to keep your fleet moving. With a lineup that includes SmartWay verified tires, the WORK Series is perfect for regional hauling and pickup and delivery, delivering the right mix of fuel efficiency, durability, and warranty that you demand.

See the full line at [CooperTruckTires.com](http://CooperTruckTires.com)



**FLEET SOLUTIONS™**  
National Account Program



**COMMERCIAL SERIES**  
**PRO WORK SEVERE**



# Dominion Equipment Parts

Established February 1998, family owned and operated Dominion Equipment Parts, LLC has been in business for more than 20 years. In just two decades, Dominion has become the OEM provider for Yanmar and Morooka equipment parts, developed its own brand of high-quality rubber track replacements, and is one of the nation's leading track importers, supplying rubber tracks for 38 crawler equipment brands.

Dominion is also a distributor of undercarriage parts for top brand names including Bobcat, Caterpillar, Gehl, Kubota, Takeuchi, and Mustang, providing sprockets, rollers, and idlers. It is the solely authorized North American distributor of specialized, compact dumpers and concrete trucks

manufactured by Fiori. Its geographic range includes the 48 contiguous United States, Canada, Mexico, and South and Central America.

Dominion initially shipped nationwide from Richmond, Virginia, its original base of operations. To improve delivery times, Dominion established distribution hubs in Dallas and Cincinnati, then added Jacksonville, Sacramento, Albany, and Portland. In 2015, it added a Canadian hub in Leduc, Alberta. Each was chosen for its logistical efficiency to give the region's customers same-day shipping with next-day delivery. Customers who choose to can also pick up their tracks or parts right from a regional warehouse, since each distribution hub also has a dedicated sales staff.

One of Dominion's greatest assets is a strong dealer network offering Dominion Rubber Tracks and associated parts, including Yanmar and Morooka. The network includes United Rentals, the largest rental agency on the continent with more than 960 locations.

Going forward, Dominion is focusing on improving its inventory and distribution capabilities even further, as well as supporting the Fiori Group machines it introduced in 2016. The compact, user-friendly vehicles increase productivity, flexibility, and operator safety in confined spaces such as narrow lanes, alleys, and tunnels. They are ideal for working in crowded city centers or in environmentally sensitive habitats and valued landscapes with restricted access. ■

## IN NEED OF REPLACEMENT RUBBER TRACKS?

We're proud that Dominion  
Rubber Tracks are the  
**#1 SELLING  
RUBBER TRACK**  
brand in America.

CALL US TODAY  
TO GET THE BEST  
PRICE ON  
RUBBER TRACKS,  
YANMAR PARTS,  
AND  
UNDERCARRIAGE PARTS

Ashland, VA >> Jacksonville, FL >>  
Cincinnati, OH >> Portland, OR >>  
Schenectady, NY >> Dallas, TX

**DOMINION**  
**Equipment Parts**

**800-365-7260**  
**[www.depparts.com](http://www.depparts.com)**

# GCP Applied Technologies

DUCTILCRETE® engineered systems help overcome the high maintenance issues that occur in traditional concrete slabs and concrete paving systems.

Traditional concrete slabs in industrial settings suffer from tremendous wear and tear. These slabs are prone to chips and cracks at control joints, even under normal use of material handling vehicle traffic. The drying of the slab's surface during concrete placement can cause slabs to curl at the edges, resulting in maintenance issues that can be extremely costly and disruptive to operations.

Typically, these floors require extensive control joints to minimize cracking and curling. However, these control joints can disrupt the flow of the space and restrict rack and equipment placement.

DUCTILCRETE® extended joint spacing slab technology differentiates your space, giving warehouses, distribution centers, manufacturing facilities, and data center tenants greater flexibility of their floor space—with lower maintenance costs by reducing the amount of joints in the slab by up to 75%.

These systems feature a patented, specially formulated combination of concrete admixture and fibers placed via a layered installation system, using a precise method of floor design. Perfected over 15+ years, the systems yield floors that are typically thinner than conventional concrete slabs while allowing for increased loading capacity. These slabs are also more curl and crack-resistant than conventionally designed concrete slabs. The result is a floor with far fewer joints, thus reducing the opportunity for joint damage, wear and tear on machinery and personnel, and joint maintenance and costs. The reduction in joints also allows for a significant increase in usable space. ■

For more, visit [www.gcpat.com](http://www.gcpat.com).

Increase space flexibility with DUCTILCRETE® extended joint spacing slab technology.



**gcp**  
applied technologies

**DUCTILCRETE®**  
**Engineered Solutions**

**Quality slabs,  
higher flexibility  
and lower  
maintenance  
costs**

- Patented extended joint spacing technology
- Increased loading capacity
- Flexible space usage and layout
- Support a wide range of uses, including food grade, manufacturing, and lab-grade facilities.
- Backed by a five-year warranty

[gcpat.com/ductilcrete](http://gcpat.com/ductilcrete)

© Copyright 2021 GCP Applied Technologies Inc. All rights reserved. DUCTILCRETE | 0321



# Insite Software

InSite Elevation is a PDF and CAD cut and fill takeoff and GPS modeling software solution for earthwork estimators who need to save time and money.

Quickly and accurately calculate cut and fill, stripping, strata quantities, paving and concrete materials, topsoil re-spread, areas, lengths, trench excavation, and backfill. Precision tools such as the Snap feature and Offset tool help keep quantities tight and as competitive as possible.

**Verification is easy.** InSite Elevation generates reports that can be exported to spreadsheets, PDF files, and most bid applications. 3Ds, cross section, and plan view cut and fill graphics provide hard evidence of all calculations. The software supports GPS and drone data for grade verification, production, and as-built calculations. Value engineering can be accomplished with the built-in Dynamic Site Balancer.

**Create GPS Machine Control Models.** The software also creates machine control and staking files without the complexity and necessity of a CAD program. The data can be downloaded to any data collector for use with conventional survey equipment.

**Training and support.** The company offers live on-board training and exceptional technical support, giving you piece-of-mind when you have a question. Continuous new feature development ensures your software is always up to date.

InSite Elevation Lite is an option for earthwork estimators who require basic take-off features. Quickly and accurately calculate, cut and fill, stripping, paving and concrete materials, topsoil re-spread, and areas and lengths. The software is incredibly user-friendly with intuitive operations that can give estimators a competitive edge. ■

**Ready to Grow Your Business? Schedule A Live Demo Today.**

[insitesoftware.com/demo](http://insitesoftware.com/demo) | 877.746.7483 | [sales@insitesoftware](mailto:sales@insitesoftware)

## 3-D EARTHWORK TAKEOFF & GPS MODELING SOLUTIONS



# INSITE ELEVATION

## No More Guessing!

- ✓ Intuitive interface — complete more bids in less time
- ✓ Quickly and accurately takeoff CAD or PDF plans
- ✓ Increase accuracy to win more bids at better margins
- ✓ Generate easy-to-read reports to prove your numbers

## Schedule a Live Demo Today!

[InSiteSoftware.com](http://InSiteSoftware.com)

# 877-746-7483

# JP Safety Channel

Rebar safety needed a better solution. This is it! OSHA statistics show that a high percentage of construction accidents are due to impalement from rebar. OSHA regulation 1926.701 states that "All protruding reinforcing steel, onto and into which employees could fall, shall be guarded to eliminate the hazard of impalement." Despite the regulation, thousands of people are injured and even killed due to inadequate protection around rebar each year.

## EASY TO INSTALL, REMOVE, STORE & RE-USE

Simply place the JP Safety Channel on exposed rebar dowels and you are protected from being impaled. The product works in vertical, incline and horizontal applications.

The JP Safety Channel is light and stackable, making it easy to store for repeated use.

To remove, simply lift the Safety Channel from the rebar dowels. It has holes strategically placed along the bottom edge of the channel to allow them to be secured to the rebar in the event of them falling off or windy conditions.

## DRASTICALLY REDUCE LABOR & MATERIAL COSTS

It only takes minutes to cover dangerous exposed rebar. As there is no preparation required, labor costs are minimal and material costs are nonexistent. The JP Safety Channel can be re-used on worksites, providing a long-term return-on-investment.

As the JP Safety Channel securely sits on exposed rebar, workers will not

need to spend time re-installing safety channels that accidentally get knocked off.

## WHY JP SAFETY CHANNEL?

- Protects 360-degrees and guards against serious injury due to a fall and abrasion on exposed rebar
- Simple, safe, light, and easy to install
- Reusable and stacks for minimal storage space
- OSHA Compliant passing the 250lb drop test from 10 ft. ■

For more information, visit [www.jpsafetychannel.com](http://www.jpsafetychannel.com).



The advertisement features a large graphic with a background of stacked JP Safety Channels. In the center, the JP Safety Channel logo is displayed above the tagline "Rebar protection that is changing job site safety". To the right of the logo is an inset photograph showing the safety channels installed on a construction site, protecting a grid of rebar. At the bottom, an orange banner contains the contact information: "Call us today for all your rebar protection needs: 1-855-957-2669 or [www.jpsafetychannel.com](http://www.jpsafetychannel.com)".



# MAX USA Corp.



The patented and safety equipped TWINTIER® platform of MAX rebar tying tools, are the safest and fastest solutions for tying #3 x #3 all the way up to #9 x #10 rebar combinations. MAX TWINTIER tools replace the repetitive motion used in the process of manually tying rebar and replaces it with a mechanical injury preventive tying solution. Compared to hand tying these tools can significantly reduce the risk of musculoskeletal injuries. TWINTIER technology allows the tools to tie 4,000 ties per charge, while delivering just the right amount of wire for greater productivity and cost savings.

The proprietary TWINTIER technology comprises 3 key mechanisms that make the TWINTIER platform one of a kind. First, a Dual Wire Feeding mechanism,

doubles the tying speed to increase jobsite productivity. Secondly, a Wire Bending mechanism produces a shorter tie height. This mechanism not only reduces wire consumption, but less concrete is now needed to fully cover each tie. Finally, a Wire Pull-Back mechanism conserves wire by dispensing just the right amount to form a wire tie relative to the size of rebar being tied.

#### MAX manufactures three models:

The **TWINTIER RB441T** is the fastest solution on the market for tying #3 x #3 to #7 on #7 rebar combinations. This tool, as well as the other TWINTIER models, features a slim arm that fits easily into tight spaces and an enclosed magazine which protects tie wire and internal mechanisms from jobsite debris, providing durability.

The **TWINTIER RB611T** is the largest capacity battery powered rebar tying tool on the market, having the ability to tie #5 x #5 to #9 x #10 rebar combinations.

The Stand-up **TWINTIER RB401T-E** is the world's first and only battery powered stand-up solution for tying #3 x #3 to #6 on #6 rebar combinations. This tool is an ergonomic solution for backbreaking slab work. Its triggerless technology (Pat. Pending) allows it to instantly tie when the contact switch is engaged.

TWINTIER tools use MAX TW1061T 19 gauge tie wire, which is available in black steel, poly-coated steel, electro-galvanized steel, BUY AMERICAN steel, and stainless-steel finishes. ■

[www.twintier.global.com/us-en/](http://www.twintier.global.com/us-en/)



**SAVE TIME, SAVE MONEY,  
INCREASE  
PRODUCTIVITY**



**Request A FREE  
Jobsite Demo**

**MAX** developed the World's First battery powered rebar tying tool in 1993. Since then, MAX rebar tying tools have revolutionized rebar tying work on a variety of jobsites all around the world. The safety equipped TWINTIER® system is the fastest solution on the market for tying rebar.

TWINTIER® technology allows **up to tie 4,000 ties** per charge, while delivering just the right amount of wire for greater productivity and cost savings. Compared to hand tying, this tool can **reduce the risk of musculoskeletal injuries**. MAX is committed to manufacturing reliable tools that have been designed to deliver enhanced performance while making sure that users can carry out safe operations.





The MAX PPE Shield means that you can trust that our tools are engineered with your health and safety in mind. MAX rebar tying tools are designed to alleviate the pain of manually tying rebar and reduce the risk of developing musculoskeletal diseases. Work safe with MAX tools. Prioritizing using proper equipment keeps you safe and healthy on the job site.

**TWINTIER®  
RE-BAR-TIER®**

**MAX USA CORP.COM**

MAX USA Corp. • 205 Express St. Plainview, NY 11803 • U.S.A. - Phone: (800) 223-4293 • FAX: (516) 741-3272



# National Construction Rentals

National Construction Rentals understands the relationships we build are just as important as the quality of work we put into each project. It's with this principle in mind that has made us become the largest supplier of temporary fencing, portable toilets, hand wash stations, luxury restroom trailers, mobile storage containers, and temporary power in the nation.

For nearly 60 years, National Construction Rentals has worked with every leading construction company, supplying temporary site service solutions to: Bechtel, Fluor, Kiewit, Turner, PCL Construction, The Shaw Group, Skanska USA, Clark Group, Jacobs, Foster Wheeler AG, The Walsh Group, Balfour Beatty, Whiting-Turner, Tutor Perini Corp., CB&I, Gilbane, Hansel Phelps, Mortenson Construction, McCarthy Construction, and countless others.

From commercial and residential construction, to government projects, public works, and emergency response, National's team of experienced professionals dedicate themselves to each project until each customer is satisfied with the results. This was our goal when we started in 1962. This is what continues to define who we are today.

For unparalleled service and superior customer support, contact us today at 800.352.5675 for the best in chain link fence, portable toilets, hand wash stations, luxury restroom trailers, mobile storage containers, and temporary power solutions. ■

For more information, visit  
[www.rentnational.com](http://www.rentnational.com)

Rentals Made Easy.™

**Serving Over 275 Metro Areas Nationwide!**



**Temporary Fence**



**Portable Toilets**



**Hand Wash Stations**



**Luxury Restrooms**



**Mobile Storage**



**Temporary Power**

**NATIONAL**  
**CONSTRUCTION RENTALS®**

**800-352-5675 • rentnational.com**

Product availability varies by region.



# Norseman OUR FIERCELY RELIABLE™ COMMITMENT

Norseman is the largest manufacturer and supplier of industrial fabric, foam, and film protective solutions in North America. We provide customers with sustainable and durable protective solutions designed to improve operating productivity in the most challenging conditions.

Since 1921, Norseman has strived to be a company that customers can rely on. Our design and manufacturing teams work alongside customers to understand their projects and working environments and to develop protective solutions that help our customers outwork, outperform, and overachieve.

## MANUFACTURING EXCELLENCE

Norseman operates more than 100,000 square feet of quality-controlled

manufacturing facilities across North America. We can meet tight delivery requirements and supply gear year-round.

Our long-term relationships with suppliers across the globe allow us to source superior materials to manufacture our high-performing protective gear.

## COAST-TO-COAST ACCESS

Each of our branches and distribution locations has its own unique design capabilities, experts in engineering and manufacturing, and staff with extensive knowledge of superior industrial fabrics, foams, and films. This expertise is complemented by our sales and customer-support presence across Canada and the US, ensuring that every customer has direct access and support from our team.

## GEAR2PERFORM

We make high-performing protective gear for people, products, and environments.

Our jobsite gear includes:

- **Concrete Curing Blankets:** Our blankets are manufactured true to size with woven polyethylene that encapsulates superior closed-cell layered foam for maximum insulation. Polypropylene foam fills each blanket all the way to the outer edges, reducing heat loss at the extremities.
- **Snow Shield:** Lay down a Snow Shield before a snowfall, then with a crane, lift the Snow Shield by all four corners, clearing away thousands of pounds of snow in minutes. This cost-effective tool saves companies both time and money. ■



CONTACT US  
(844) 667-7362 [norsemanusa.com](http://norsemanusa.com)

# NORSEMAN HAS YOU COVERED.

## JOBSITE PROTECTION GEAR YOU CAN COUNT ON.

In-stock and ready to ship. Distribution locations across North America.



# Poseidon Barge, LTD

Poseidon Barge, LTD continues to set the standard for high quality, customer service, and developing products that are in demand. The Poseidon P-10 is a glowing example of what an idea, determination, and hard work can turn out to be.

## MEET ANY CHALLENGE

The P-10 comes in two sizes: 44 ft x 11 ft x 10 ft and 22 ft x 11 ft x 10 ft. They are the largest sectional barge on the market that is capable of over the road transportation. This gives Poseidon Barge the ability to meet any challenge anywhere in the world, especially on inland water ways that require the largest cranes performing monster lifts.

Poseidon P-10's are equipped with the same Patented Roll Form Decks that Poseidon is known for. These Roll Form decks offer Deck Point Load Capacity of 20,000 per sq ft point load vs the 5,000 lbs per sq ft that traditional deck plate is rated for. This helps minimize damage and allows for heavier equipment to be placed on the deck.

The P-10 is no stranger to the spotlight having been used in many high-profile projects: multiple projects in downtown Chicago, the new Tappan Zee Bridge (New York) and the I-74 Bridge (Iowa) just to name a few. Each time, the world's largest cranes were placed on the P-10's and they met the challenge.

## BUILT IN INDIANA

P-10's are manufactured in Berne, Indiana, the site of Poseidon Barge, LTD's Corporate Headquarters. With more than 130,000 square feet of manufacturing space, Poseidon Barge is equipped to handle not only the size of the P-10 Sectional Barge, but the volume associated with all their other products. Poseidon Barge offers Sectionals ranging

from 4 ft hull depth, 5 ft hull depth, 7 ft hull depth, and of course, 10 ft hull depth. A full line of accessories and hydraulics are available for purchase and rent as well.

In 2020, Poseidon Barge, LTD became the only Sectional Barge manufacturer in North America to be ISO 9001:2015 Certified further recognizing the commitment to quality, continual improvement, and customer satisfaction. ■



*Poseidon Barge, LTD is a manufacturer of sectional barges and accessories for rent or purchase. Please call 866.992.2743 or visit [www.poseidonbarge.com](http://www.poseidonbarge.com) for additional information.*

## Poseidon Barge Makes it Big with The P-10

## — RAISING THE BAR

on quality and design —

### P10 PORTABLE SECTIONAL BARGE

- Deck Barge Strength with Sectional Barge over the road mobility
- Tops fabricated with a patented Roll Form Non-Skid Deck Material
- Holds larger cranes & heavier picks with a smaller foot print
- Exterior coated with Marine Grade Baril Marine Coating
- Deck Point Load Capacity is 20,000 lbs psf

**POSEIDON**  
Barge, Ltd

ISO  
9001:2015  
AEM  
Association of  
Equipment Manufacturers

**725 East Parr Road, Berne, IN 46711 PH: 866-99-BARGE; FAX: 260-589-2088**  
**STOCK LOCATIONS: Berne, IN • New Orleans, LA • Leland, NC • Cocoa, FL**  
**Coeymans, NY • St. Louis, MO • Plain, WI**



# Sunflower Boat & Barge

Sunflower Boat & Barge of Dubuque, Iowa, is a one-stop-shop for contractors working over the water. Sunflower maintains an extensive fleet of marine construction equipment and related accessories available for lease. Sunflower expanded its fleet by adding another new construction crane barge and multiple 600 hp truckable tugboats, with similar additions planned for the immediate future.

Sunflower Boat & Barge's existing fleet includes numerous inland river crane barges, material barges, and deck/spud barges of various sizes. Sunflower also leases portable sectional barges, available in four different sizes (3 ft, 4 ft, 5 ft, and 7 ft hull depths), allowing for configuration of a work platform that

fits each customer's unique needs and also allowing access to nearly every inland water. Sectional barge platforms can be designed to support projects ranging from floating plant operations for painting and drilling jobs all the way up to configurations designed to handle heavy cranes.

In addition to barges, Sunflower has traditional tugboats ranging in size from 300 hp to 1,800 hp, as well as truckable tugboats from 300 hp to 600 hp. Hydraulic dredges? Yep, they have them too, again, in a range of sizes to fit the requirements of your project. Dredges vary from 8 inches up to a new in 2015 Ellicott 1270. Crawler cranes ranging from 45 ton to 450 ton are also available for lease and can

be loaded to barges from their facility in Dubuque, Iowa. Additional equipment available includes spuds, spudwells, and spud winches, as well as long reach excavators, dredge pipe, and heavy rigging and lifting gear. ■

## Sunflower Boat & Barge expands marine equipment rental fleet.

*For more information, questions, or to discuss your upcoming project, you can reach Sunflower Boat & Barge at 563.583.0556, or visit [www.sunflowerboatandbarge.com](http://www.sunflowerboatandbarge.com).*



### Available for Lease:

- Sectional Barges
- Spud Barges from 75x32 to 195x70
- Hydraulic Dredges
- Truckable Tugboats from 300 – 600 hp
- Traditional Tugboats
- Support Equipment



[www.sunflowerboatandbarge.com](http://www.sunflowerboatandbarge.com) • 563-583-0556

# Yokohama OHT

When it comes to selecting tires for Reliable Paving's wheeled skid steers—a mix of more than a dozen Caterpillar 262Ds and Bobcats—shop and equipment manager Ryan Young says buying on price can be short-sighted.

When Young joined Reliable Paving 3 years ago, cheaper tires were failing in droves at the company's paving, repair, and construction sites all over the Dallas-Fort Worth area.

"It seemed like we were just calling in for tires left and right, all the time, on those skid steers," he says.

He immediately implemented a new approach.

"For us, it's usually, 'what's the most reliable?' and we're willing to pay for that because in the long run we get more durability and more life out of that more expensive tire," Young explains.

## Galaxy Mighty Trac ND durability shines on Texas skid steers

### NEW MIGHTY TRAC ND

Reliable Paving's tire dealer, Brian Edwards of Star Tire in Dallas, Texas, knew Young would appreciate the new Galaxy Mighty Trac ND.

"The Mighty Trac has got a ton of rubber on it—just one 32nd less than the Galaxy Hulk—and the cost per hour is very low," Edwards says. "I have a couple of customers using them, primarily on skid steers they're doing paving work with, and they're performing really well."

The Galaxy Mighty Trac ND has a rubber-to-void ratio of 52:48, notes Ryan Lopes, national product manager for Yokohama Off-Highway Tires America, Inc. The tread blocks are placed more densely in the center of the tread to reduce wear, which opens up the sides for better self-cleaning, he explains.

"The tread blocks of the Mighty Trac also feature sipes, which improve their flexibility and traction as well as their ability to dissipate heat," Lopes adds.

### SIDE BY SIDE

A side-by-side comparison left no doubts at Reliable Paving.

"We had two machines and Star Tire put the Galaxy on one and we had this other cheap, knock-off brand on the other," Young recalls. "You could just see how fast the other ones had worn out compared to the Galaxys—the cheaper tires already had a lot of chunks and were showing a lot more aggressive signs of wear. At that point, I made a decision to go with the Mighty Trac as much as I can." ■



## MORE OPTIONS. MORE OPPORTUNITIES.

With the Yokohama OTR, Alliance, Galaxy and Primex brands now under one umbrella, Yokohama Off-Highway Tires America, Inc. offers more than ever to the construction industry. More options—4,000 tires and sizes. More traction. More horsepower to the ground. More ways for you to get the most out of your construction equipment.



Ask your tire dealer about Yokohama OTR, Alliance, Galaxy and Primex construction tires, visit [yokohama-oht.com](http://yokohama-oht.com) or call (800) 343-3276.

[www.yokohama-oht.com](http://www.yokohama-oht.com) | 800-343-3276 | [@yokohamaohta](https://twitter.com/yokohamaohta)



## Alpine Rockwheel

Rockwheel Americas of the Alpine Group has expanded its product line beyond its industry leading Rockwheel drum cutters. Enter the **RockCrusher** and **RockScreener** attachments. Acquired from Hartl Crushers, these work tools have been proven over many years to be the most robust and productive crushing and screening buckets on the market. The focus here is the RockCrusher, which is available for excavators from 15 to 50+ tons. Several advantages distinguish this crusher bucket from its competitors. These include a unique Quattro movement with up-thrust that produces consistent cubical shaped material, minimizes fines, and maximizes throughput. The reverse function makes it easy to clear jams and the RockCrusher has a massive crushing plate surface area that is up to 40% greater than other units on the market. Applications include: demolition, excavation, quarries, recycling, natural stone processing, and trenching and pipeline construction. Crush, reuse, and recycle material on-site using an attachment rather than mobilizing expensive crushing plants. Accessories include dust suppression system, central greasing, magnet, and remote cameras. Do more with your excavator! Dealer inquiries welcome. ■

814.466.7134 | [www.alpinecutters.com](http://www.alpinecutters.com)



**ROCKCRUSHER**

**CRUSH, REUSE & RECYCLE**

**ROCK  
CONCRETE  
BRICK  
RAIL TIES  
ASPHALT  
GLASS & CERAMIC**

[www.rockwheelamericas.com](http://www.rockwheelamericas.com)  
info@rockwheelamericas.com | +1-814-466-7134

**ROCKWHEEL AMERICAS**  
A Division of ALPINE

**DEALER INQUIRIES  
WELCOME!**

## MBW, Inc.

MBW, Inc. has been manufacturing one of the construction industry's most interesting lines of small compaction and concrete equipment. Located in Slinger, Wisconsin, production began more than 50 years ago with its introduction of a lower maintenance vibratory plate compactor. MBW does not simply duplicate designs developed by others. MBW begins each new engineering project with the assumption that significant progress can be made in terms of improved productivity, reduced maintenance, longer life, enhanced user safety, and lower long-term cost of ownership. MBW backs its products with a 1-year warranty.

Today, the company's product line encompasses a variety of soil compaction products including single direction vibratory plates, small and large reversible vibratory plates, gas and air rammers, skid steer roller attachments, and small and large excavator wheel attachments. The concrete side includes a vibratory wet screed with bar sizes from 4 ft to 24 ft, truss screed, three sizes of walk-behind power trowels and three sizes of ride-on power trowels, concrete power buggy's, mortar mixers, and concrete sprayers. ■

[www.mbw.com](http://www.mbw.com)



**COMPACTON  
& CONCRETE**  
CONSTRUCTION EQUIPMENT

**VIBRATORY PLATES**

**RAMMERS**

**MADE IN THE USA**

**WALK-BEHIND POWER TROWELS**

**SCREEDS**

**POWERED BY  
MID RED LITHIUM**

**MBW.COM**