

**World of Concrete 2014**  
**Las Vegas Convention Center**

**Exhibits: Jan 21-24**

**Seminars: Jan 20-24**

**C**elebrating 40 years, World of Concrete is the industry's only annual international event dedicated to the commercial concrete and masonry construction industries showcasing leading industry suppliers. WOC features innovative tools, construction machinery, construction equipment, safety training courses and training, technologies, and unlimited networking opportunities to give you new ways to sustain and grow your business. Make plans now to attend World of Concrete 2014.

Stop by  
*Modern Contractor Solutions*  
**Booth C4267**  
and visit with the sales crew.



**2014**  
*World of Concrete*  
**Showcase**

*Turn the page for a sneak  
peek at some of the products  
you'll see at WOC!*







## ARBORTECH:

The AS170 offers extreme levels of precision, accuracy, and control allowing the tool to be used for a wide range of applications from heritage masonry work to electrical installations. Increase your productivity using this revolutionary patented Allsaw technology that cuts safe, square, and deep, and is the ideal preference for masonry repairs, restorations, installations, and renovations. The AS170 is the perfect masonry tool for every contractor doing jobs in tuck pointing, brick removal, repairing brick walls, restoration, renovation, lintel repairs, expansion joints, and so many more applications.

[www.as170.com](http://www.as170.com) | WOC BOOTH S11850

## ELK RIVER, INC.:

Your number one source for fall protection systems, products, and accessories. With more than 20 years in business, Elk River's focus has always resulted in growth. We have expanded our facilities many times, and each expansion had one primary aim—gain the physical space needed to bring our products to life and better meet our customer's demands. There is a science to product manufacturing, which requires research, testing, and methods. There is also an art to designing our products: how does it feel; how does it wear; how does it look. The art represents the traditional values; the science reflects our use of technology. [www.elkriver.com](http://www.elkriver.com) | WOC Booth S11121

FOR ALL YOUR SAFETY  
NEEDS  
ELK RIVER, INC.

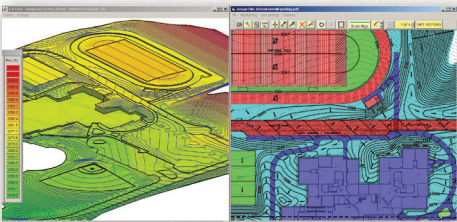


## FERGUSON SAFETY PRODUCTS:

Specializes in building materials and maintenance supplies that are labor-saving, highly effective, and sustainable. Our most popular: Crystal-Lok works on Portland-based cement to waterproof and harden new and existing applications. Easy to apply, even in wet conditions. Helix Micro-Rebar, added to concrete, increases shear and tensile strength of concrete, reduces your skilled labor needs, and eliminates placement errors. Liquid Hammer keeps your tools and equipment in peak working condition by removing concrete or grout residue without harsh chemicals. Woman-Owned Small Business for more than 25 years. [www.fergusonsafety.com](http://www.fergusonsafety.com) | WOC Booth N1359

## HUSQVARNA CONSTRUCTION PRODUCTS:

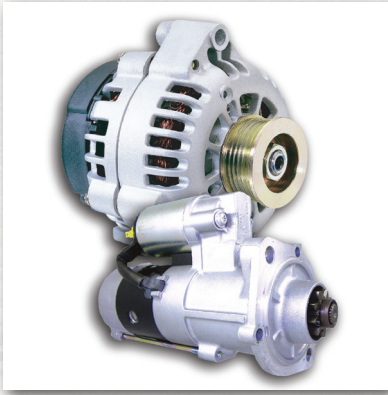
Introduces PRIME™, a new generation of high-performance technology for electric cutting equipment. Through innovative utilization of high-frequency current and digital processing, PRIME™ is able to help contractors reach a whole new level of efficiency and usability, increasing performance, productivity, and mobility. The whole PRIME™ product range will be unveiled at World of Concrete. Visit us to find out where PRIME™ can take your business. Powerful, Revolutionary, Intelligent, Modular, Electric—that's PRIME™. [www.husqvarna.com](http://www.husqvarna.com) | WOC Booth C4305 and O31700



## INSITE SITWORK EARTHWORK & UTILITY ESTIMATING SOFTWARE:

Provides cut & fill and sanitary & storm takeoffs from vector files (PDF and CAD), image files (PDF, TIF & JPG files), or data collector (GPS, total station). It's a totally portable with no digitizer to tie you down. A coordinated cursor between the zoomed takeoff window, a site overall, and 3D Live provides instant validation that your takeoff is correct. Select contours, including dashed existing lines, on vector PDFs without tracing. Snap to building corners and curbs for CAD-like accuracy and align multi-page documents. Take a virtual drive through the site. [www.insitesoftware.com](http://www.insitesoftware.com) | WOC Booth C4277





### KUBOTA ENGINE AMERICA CORP. (KEA):

Launched a line of Remanufactured Alternators and Starters to add to the Genuine KUBOTA Parts line. KEA offers over 30 different alternators and starters to provide each customer with a low-cost alternative to new. Every part is remanufactured and tested to meet the same KUBOTA standards as a new OE part. KEA recommends using only Genuine Kubota Parts in your KUBOTA Industrial Engine. Genuine KUBOTA Remanufactured Alternators and Starters are competitively priced and carry a 1-year warranty. Refer to the web to find your local Authorized Kubota Engine America Distributor. [www.kubotaengine.com](http://www.kubotaengine.com) | WOC Booth C4854

### LINE DRAGON:

Powered by 12 horsepower gasoline engines, the Line Dragon will run over rebar grid, radiant heat lines, nelson studs, floor decking, or other prepared surfaces. The placer drags the end of the delivery line and places concrete while the dragger is hooked 20 ft back carrying excess line and keeping it out of the pouring area. Our machine moves forward, backward, left, right, or oblique. The placing boom swings 360° making almost all areas accessible to the placer. The machine is remote-controlled and can easily be operated from a safe distance. [www.linedragon.com](http://www.linedragon.com) | WOC Booth C6272

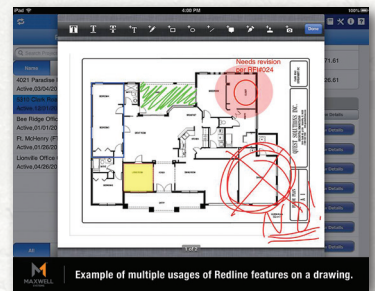


### LIGHTNING STRIKE ROLLER SCREED SYSTEM:

Accomplish faster placements and flatter floors with the Lightning Strike Roller Screed System. Call your local equipment dealer today for a demonstration and a quote. See how we can speed up all of your pours from slopes to circular pours, parking lots to agricultural slabs, commercial to residential. Stop in at WOC and take the lightning strike roller screed for a “test spin.” Check out our website videos and get additional information on time and labor saving attachments. Increase your bottom line by 30% or more guaranteed! [www.luraconcretescreed.com](http://www.luraconcretescreed.com) | WOC Booth G52371 and O31025

### MAXWELL SYSTEMS PROCONTRACTORMX:

All-in-one construction software solution with a powerful enhancement—RedLine, which works with Maxwell’s Mobile Connect app. Use RedLine to modify electronic documents with finger-touch or stylus on an iPad. For example, easily mark up, annotate, stamp, approve, reject, sign, and even insert photos to important project documents—and then sync between iPad and office to share data in real time with architects, the office, vendors, or anyone involved in the project. Ideal for contractors needing more productivity in the field. It’s an affordable and convenient way to communicate and manage for best profit. [www.maxwellsystems.com](http://www.maxwellsystems.com) | WOC Booth C3745



### OZTEC BACKPACK CONCRETE VIBRATOR:

Equipped with a rotary throttle, ensures proper operating speed. The patented “RubberHead®” surpasses all standards for protecting epoxy coated rebar and is unequalled in consolidating concrete. Oztec offers the versatility of fully interchangeable steel and rubber vibrating heads and flexible shafts. Oztec electric and gasoline motors are the most powerful and reliable in the industry today. The patented Oztec “Rebar Shaker®” turns the entire length of rebar into a vibrator and consolidates concrete in both walls and columns better than any other method. [www.oztec.com](http://www.oztec.com) | WOC Booth N2526





## ROMIX CHEMICAL, INC.:

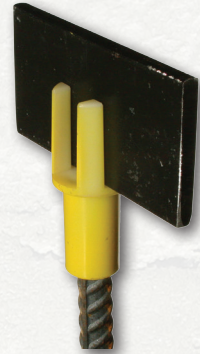
Specializes in biodegradable concrete removing detergent compounds, featuring cutting edge alternatives to harsh acid products, specifically with "Back-Set" Molecular Cement Dissolver™. In addition, RoMix offers a full line of soaps and anti-stick products, as well as state-of-the-art spray systems and dispensers. With more than 25 years in the ready mixed concrete industry, RoMix brings the highest quality service, products, and safety standards.

[www.romixchem.com](http://www.romixchem.com) | WOC Booth N237

## SPIN SCREED, INC.:

Just developed and made available to contractors, its screed support system reduces the fill volume by 85% when compared with a pipe screed. The new flat bar screed support system uses a plastic chair set on top of rebar driven to the proper grade. Instead of the contractor screeding off the top of a pipe, they screed off of the top of a flat bar. After the bar is removed, the small void left in the concrete is easily filled by simply bull floating the area. There is no need to fill and this produces a fast and flat surface every time.

[www.spinscreed.com](http://www.spinscreed.com) | WOC Booth N2448



## THUNDER CREEK EQUIPMENT:

Its Double Wall fuel and service trailer provides 110% fuel containment. Compliant with the EPA-SPCC, DOT406, and Transport Canada regulations, this trailer tows easily at highway speeds and is built for continual off-road use. The convenience of having diesel fuel, DEF, and service in one package cuts downtime on the jobsite by filling fuel and DEF quickly and simultaneously. The trailer also features a lockable front toolbox that provides storage for tools and parts.

[www.thundercreekequipment.com](http://www.thundercreekequipment.com) | WOC Booth C5881

## WAGMAN METAL PRODUCTS:

Turn your trowel into a powerful scrubbing and stripping machine. Select from various bristle types depending on your desired aggressiveness. The patented Wagman Revolution Rotary System creates a passive planetary action that is ideal for surface preparation, removing residue from stain and dye applications, stripping acrylic sealers, applying densifiers, running diamond pads, and other uses. Many of the bristle types can be used on ride-on trowels. Get the job done fast and efficiently. [www.wagmanmetal.com](http://www.wagmanmetal.com) | WOC Booth S10354

